

— 2024 —



Hanson

P L Y W O O D L I M I T E D

Plywood / OSB / MDF / HDF / Hardboard /
Chipboard / Blockboard / Timber Panels / Door Blanks / Flexible Panels /
Decorative Panels / Fire Retardant Panels / Building Boards / Panel Processing

"THE THING ABOUT CLIMATE
IS THAT YOU CAN EITHER
BE OVERWHELMED BY THE
COMPLEXITY OF THE PROBLEM
OR FALL IN LOVE WITH THE
CREATIVITY OF THE SOLUTIONS"

MARY HEGLAR



ABOUT US

Hanson Plywood Ltd offer services which are aligned to the individual requirements of a varied, diverse and ever-growing customer base. Our clientele ranges from general construction companies to high quality

furniture manufacturers and all the way back to architects working on their initial specification.

Our company ethos is to strive to advise and assist at all levels to ensure the technical requirements of all industries can be met.

ENVIRONMENT

We are members of Timber Development UK (TDUK) and as such, we are signatories to the Responsible Purchasing Policy. The policy has provided a strong foundation for our robust Due Diligence System, which allows us to ensure that all products are at negligible risk of originating from illegal sources under the UK Timber Regulation (UKTR).

Following UK's departure from the European Union, the EUTR has since been replaced by the UKTR. As this is the UK's very own timber regulation, it allows us to widen the scope of our Due Diligence to assess both EU and non-EU supply chains.

We are compliant with both FSC® and PEFC Chain of Custody schemes and are closely involved with Indonesian companies exporting FLEGT licensed goods to the EU. Our implementation of an Environmental Management System that meets the requirements of ISO 14001 enables us to reduce and mitigate risks of any potential adverse impacts to the environment that can be caused by the operation of our business.

Involvement in TDUK's Sustainability Committee and further participation on TDUK's Responsible Sourcing sub-committee, means that Hanson Plywood is at the forefront of trade policy and action regarding carbon, circular economy, responsible sourcing and further environmental issues. This work means that we are proactive in promoting sustainable sourcing throughout the UK timber industry.

We are acutely aware of our responsibility to ensure a balance between the economic, environmental, and social aspects of our business.

Using the latest business management software and supporting technologies we have never had greater control and transparency throughout our supply chain.

STAFF

Investment in the latest technology helps us to deliver the goods you require on time, within budget and to the correct specification for the application.

The sales team has a wealth of experience ensuring that the products we supply are the products you require. Our accounts, administration, transport and warehousing departments work seamlessly in support.

ASSURED PERFORMANCE

Continual investment in our head office and warehouse facility ensures that quality of product and optimum service will be guaranteed for many years to come.

The company currently operates using a quality management system certified to the latest ISO 9001 standard. This enables us to consistently challenge ourselves to evolve, improve and adapt our business to meet the demands and requirements of our customers.

ADDITIONAL SERVICES

We also offer services such as cutting, machining, laminating and veneering. By working closely with market leaders within these specialist industries, we can offer the best available product and service.



PRODUCT CONTENTS

USING OUR GUIDE

We endeavour to produce a comprehensive and easily usable reference document for buying and specification purposes. It is an illustration of the main product lines and items of stock available.

Our range of products is continually being expanded, so if there is anything you require that is not listed in this catalogue, please contact our sales team who will be able to assist you with your specific requirements.

Our experienced specialists are on hand to advise in greater detail on product specifications, suitability for purpose, technical enquiries and competitive pricing.

08



PLYWOOD

- 10 Specification
- 12 Architects, Designers and Specifiers
- 13 Quick Reference Guide
- 14 Our Specialist Plywood Products
- 16 Hardwood
- 17 Softwood
- 18 Poplar
- 22 Birch
- 27 Technical/Coated Plywood

30



OSB

- 32 OSB/3
- 32 SmartPly Ultima
- 32 SmartPly Propassiv
- 32 SmartPly SiteProtect & SiteProtect Plus

34



MDF - HDF - HARDBOARD

- 36 Medium Density Fibreboard
- 36 Matchboard
- 36 Black MDF
- 38 Trade
- 38 Ultralight
- 38 Moisture Resistant
- 38 Premium Moisture Resistant
- 38 Exterior
- 38 Hardboard

40



CHIPBOARD

- 42 P2 Furniture Grade
- 42 P5 Flooring
- 42 P6 Flooring

44



BLOCKBOARD - TIMBER PANELS - DOOR BLANKS

- 46 Blockboard
- 46 Pine Panels
- 46 Oak Panels
- 46 Door Blanks

48



FLEXIBLE PANELS

- 50 Plywood
- 50 MDF

52



DECORATIVE PANELS

- 54 MDF
- 54 Plywood
- 54 Birch
- 54 Blockboard
- 55 Flexi Veneer
- 55 Chipboard - Melamine Faced Panels
- 55 MDF - Melamine Faced Panels
- 56 Custom Veneering Solutions

APPLICABLE STANDARDS

Look out for our applicable standards on each product category page. This provides a concise list of key standards relevant to the range of products in that section.

Please contact our sales team for more information.

58



FIRE RETARDANT PANELS - BUILDING BOARDS

- 60 Classifications and Standards
- 63 Poplar
- 63 OSB
- 63 MDF
- 63 Chipboard
- 64 Non-Combustible Panels
- 65 Multi-Pro/Multi-Pro XS
- 65 Multi-Pro Tile Backer Board
- 65 Multi-Rend

66



PANEL PROCESSING

67



APPENDICES

ENVIRONMENT AND SUSTAINABILITY

HANSON ENVIRONMENTAL/ETHICAL AND TECHNICAL TEAM (HEAT)

Hanson plywood has a very carefully considered approach to all matters of environmental, ethical and technical concern which is managed through the company's dedicated HEAT team. The purpose of HEAT is to ensure that the company provides trusted and valuable resources to our clients in matters and principles which the company regards as at the core of our trading ethos.

Here are some functions of the HEAT team:

- The primary function of our HEAT Team is to provide the highest standards of assurance for the business and our customers in all environmental, ethical, and technical considerations
- The Team manages the company Environmental Management System which is certified to ISO 14001
- The company has detailed and demanding due diligence processes to assess that all products are compliant according to our HEAT Team stipulations. Our HEAT Team standards are intended to exceed standard industry compliance
- Our HEAT Team are working with our supply chain to ensure we have a clear, trusted, and proven picture of all products according to our stringent requirements. We are encouraging and supporting our suppliers in producing Environmental Product Declarations (EPD'S)
- We are actively engaging with our customers to fully explain how we are working to ensure we provide full confidence in the way we conduct ourselves as a business and how we support industry. In doing so, we will be explaining the value and benefit as we work together with our clients in robust and transparent environmental, ethical, and technical considerations
- We are assessing all of our products in order to provide our own HEAT product rating according to specific environmental, ethical, and technical credentials. These ratings will assist our clients in easily choosing products which provide excellence in all areas of evaluation. Our belief is that products that carry very strong HEAT ratings will in practice provide best value to a business
- Our marketing and HEAT teams are working to raise awareness of our activities through our media platforms including, company websites, social media, company showroom, trade events, etc



100% ELECTRICALLY POWERED HEAVY GOODS VEHICLE

SUPPORTING OUR SUSTAINABILITY ETHOS, WE HAVE ACQUIRED A NUMBER OF ELECTRIC VEHICLES TO COMPLEMENT OUR FLEET. THIS INCLUDES OUR FIRST 100% ELECTRICALLY POWERED HEAVY GOODS VEHICLE AND 5 COMBILIFT FORKLIFT TRUCKS TO ACCOMMODATE OUR NEW WAREHOUSING SPACE. OUR VEHICLES WILL BE POWERED BY A ZERO-CARBON ENERGY SUPPLY.



NET ZERO AND CARBON REDUCTION

"NET ZERO OCCURS WHEN THE TOTAL GREENHOUSE GAS EMISSIONS RELEASED INTO THE ATMOSPHERE AND THE TOTAL AMOUNT OF GREENHOUSE GAS EMISSIONS REMOVED FROM THE ATMOSPHERE ANNUALLY ARE EQUAL"



TRADE ASSOCIATION REFERENCE

UK Companies that import wood products from outside the UK have a responsibility for ensuring their legality under the UK Timber Regulation (UKTR).

Hanson Plywood Ltd are fully committed to this legislation and a robust Due Diligence System is in place to best ensure that we only source products from legal and sustainable sources.

Our Due Diligence System uses the Timber Trade Federations (now TDUK) Responsible Purchasing Police as its foundation. As members of the TDUK we have had a Due Diligence System in place since 2007. It has since been developed into a framework to assist originally with EUTR compliance and now UKTR compliance, enabling us to ensure that all our products are sourced from legal and sustainable forests.

Timber Development UK was formed in 2021 from the merger of two of the largest and longest established organisations in the supply chain, the Timber Trade Federation (TTF) and Timber Research and Development Association (TRADA). By bringing these two associations together TDUK become the largest, most comprehensive supply chain body in the UK, spanning from sawmill to specifier and all points in between. As an organisation, TDUK seeks to connect the supply chain, lead best practice, and accelerate a low-carbon future; empowering timber design, and acting as an agent of change towards more sustainable, low carbon forms of construction.



CONSTRUCTION PRODUCTS REGULATION

The Construction Products Regulation (CPR) has been in force since 1st July 2013. From this date, all wood-based products covered by a harmonised European Standard will be required to declare their performance characteristics via CE marking in order to be placed on the UK and EU construction products markets.

Following the UK's departure from the European Union, we are preparing for the proposed changes from CE Marking to UKCA Marking for our products. The standards associated with sheet materials will not change in the early stages but the assessment mark and factory production controls will be managed by UKCA marking.

In the case of wood-based panel products, 'BS EN 13986:2004 wood-based panels for use in construction' refers.

To reflect the new CPR, section 7 of UK Building Regulations has also been amended to adopt CE marking as the primary route to demonstrate that products are fit for purpose in UK construction.

Products within the scope of the CPR can be identified via marks on the products and/or the delivery notes. Full CE marking information along with Declarations of Performance are available on request from our sales team.

Under the Construction Products Regulation we request and store Declarations of Performance on all stocked products.

Our staff are trained and knowledgeable about the regulation and can assist with all queries relating to product performance.



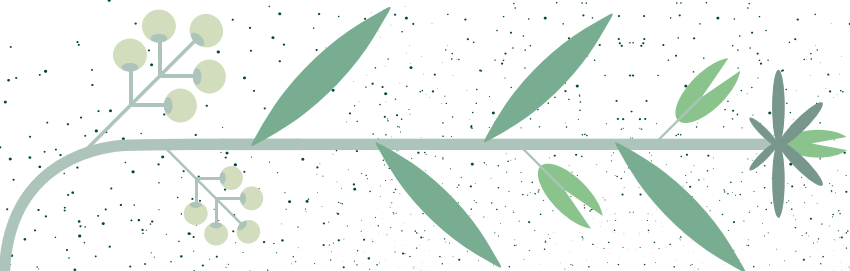
We have a drive to reduce our carbon footprint and are evolving our program of working towards carbon neutrality as a business with the help of Planet Mark, our dedicated sustainability partner.

We have been collecting Environmental Product Declarations for products so that we can collate data on embodied carbon in our product range. In addition, we also have an Environmental Management System in place which is certified to ISO 14001.

WE KNOW THAT OUR GROWTH
AND ENVIRONMENTAL
PROTECTION GO HAND IN HAND

APPLICABLE STANDARDS

- BS EN 313 – Plywood classification and terminology
- BS EN 314-2 – Bonding quality
- BS EN 635 – Plywood classification by surface appearance
- BS EN 636 – Plywood specification



PLYWOOD

Plywood is manufactured by using multiple layers of wood veneer bonded together with an adhesive.

Each layer of veneer is usually oriented with its grain running at right angles to the adjacent layer in order to produce a strong, mechanically balanced and stable panel.

Specification	10
Architects, Designers and Specifiers	12
Quick Reference Guide	13
Our Specialist Plywood Products	14
Hardwood	16
Softwood	17
Poplar	18
Birch	22
Technical/Coated Plywood	27



Scan me to find
out more

SPECIFICATION OF PLYWOOD AND PERFORMANCE CRITERIA

Plywood manufactured for construction purposes is specified in accordance with EN 636. Products claiming compliance with this standard must also carry the specified markings, which includes a reference to EN 636.

EN 636:2012+A1:2015: Plywood Specifications
The latest edition of EN 636 retains the designations -1, -2 and -3 from the previous three part standard to represent dry, humid or exterior conditions of use.

These conditions are defined according to the parameters laid down for Use Classes in BS EN 335 'Durability of wood and wood-based products - Use classes: definitions applicable to solid wood products'.

Dry Conditions: For interior applications with no risk of wetting, defined in Use Class 1, with a moisture content corresponding to environmental conditions of 20°C and 65% relative humidity.

Humid Conditions: For use in protected exterior applications as defined in Use Class 2, with a moisture content corresponding to environmental conditions of 20°C and 85% relative humidity.

Exterior Conditions: For use in external applications, as defined in Use Class 3, where the moisture content will frequently be above 20%.

EN 636 also introduces bending strength and modulus classes based on bending tests to EN 310. These designate strength (F) and modulus (E) parallel and perpendicular to the face grain. An example designation would therefore be F10/20, E30/40.

EN 636 gives minimum values for each of the classes and EN 12369-2 gives corresponding characteristic values for use with each of these classes.

Plywood for use in construction must demonstrate compliance with the Construction Products Regulation (CPR). The most straightforward route to achieving this is by demonstrating compliance with EN 13986, and therefore must carry a CE mark.

Specifying plywood for use in exterior conditions - EN 636-3

Understanding plywood and plywood specifications can be a complicated business. The following information will guide you through the process to ensure that your specification of plywood will indeed be fit for purpose.

EN 636 refers to plywood specifications and forms part of the harmonised standard for wood-based panels for use in construction **EN 13986:2004 +A1:2015**.

EN 636 - 3 specifies the requirements for plywood for use in external applications as defined in Use Class 3, where the moisture content will frequently be above 20%.

Use Class 3 is defined fully in **EN 335:2013** but essentially it outlines situations in which wood or wood-based product is above ground and exposed to the weather (particularly rain). Attack by disfiguring fungi and wood destroying fungi is possible as well as attack by wood boring insects, including termites.

Essential elements of plywood for EN 636-3 (Use Class 3)

Bonding quality - The bonding quality of the plywood needs to comply with the requirements of bonding class 3 of EN 314-2.



- Fungal organisms.
- Frost, insect attack and severe chemical pollution may sometimes also have an adverse effect on the service life of plywood.

Rain, either wind-driven or running down the facade of a building, can be rapidly absorbed by unprotected end grain of timber.

Plywood contains much end grain around the edges which must be protected if satisfactory performance is to be achieved. If the edges are not protected, water can enter and give rise to stresses which can eventually cause splitting of the wood and separation of the veneers around the edges even of 'exterior' bonded panels. In the shorter term, it often gives rise to unsightly staining behind a finish and can lead to mould growth, blistering of paint and ultimately decay.

It is therefore imperative that the edges of all panels are protected if satisfactory performance can be achieved.

Water usually penetrates much more rapidly than is lost. This is particularly the case if its entry is localised, such as through an area of improperly applied edge sealant. Under these conditions water can be trapped for long periods behind fairly impermeable finishes putting considerable demands on the durability or preservative treatment of plywood and the adhesion of the finish.

Durability of Glue Bonds

Plywoods are produced with glue bonds which range from those suitable for interior uses only, to those which will withstand full exposure for long periods.

BS EN 314-2 Plywood bonding quality requirements define three classes on the basis of test requirements that the plywood bond must meet:

- Class 1:** Dry conditions (interior, dry uses).
- Class 2:** Humid conditions (protected external service, damp internal uses and limited exposure during construction).
- Class 3:** Exterior conditions (exposure to weather over substantial periods or continuous exposure to relative high humidity).

Full Exterior Bonding

Class 3 bonds are a requirement for plywood to comply with BS EN 636-3. The bonds are largely comparable with what were known as WBP - weather and boil-proof bonds (to BS 6566 Part 8, now withdrawn), except that the requirement that effectively they be made with phenolic-type glues has now been dropped. To qualify the bond must now meet the stipulated test requirements.

The properties required of panels in EN 636 are shown in the table below:

PROPERTY	APPLICATION	STANDARD	1 - DRY 20°C with R/H 65% Interior applications no risk of wetting	2 - HUMID 20°C with R/H 85% Protected exterior applications or humid environments	3 - EXTERIOR Moisture content higher than 20% Unprotected exterior applications
Bonding Quality		EN 314-2	Bonding Class 1	Bonding Class 2	Bonding Class 3
Durability		EN 335	Use Class 1	Use Class 2	Use Class 3
Mechanical Properties	Structural - Characteristic Values	EN 636/ EN 310	✓	✓	✓
	- Bending Strength	EN 12369-2 or EN 789/EN 1058	✓	✓	✓
	Non Structural - Bending Strength	EN 310	✓	✓	✓
Formaldehyde Class*		EN 13986, EN 717-1, EN 717-2	E1	E1	E1
Dimensional Tolerance		EN 315	✓	✓	✓

*All Timber Development UK (TDUK) members adhering to the TDUK Code of Conduct - Panel Products Code of Practice must trade in products that meet E1 Classification. Formaldehyde emissions higher than E1 are not acceptable.

Plywood for permanent use in construction must demonstrate compliance with the Construction Products Regulation (CPR) via the use of CE marking.

This table is designed for guidance only and all specific performance requirements for particular projects should be cross checked in detail.

Biological durability - Plywood shall be appropriate for the prevailing climatic conditions. It is therefore important to assess whether the durability of the plywood to be used is sufficient and if not consider another solution such as design or preservative treatment. Guidance on factors affecting durability can be found in **CEN/TS 1099**.

When specifying plywood for Use Class 3 appropriate surface and edge coating should also be applied.

Relevant standards

EN 13986:2004+A1:2015 - Wood panels for use in construction - characteristics, evaluation of conformity and marking.

EN 314-2 Plywood Bonding Quality - part 2: Requirements.

EN 335:2013 - Durability of wood and wood-based products - Use Class definitions, application to solid wood and wood-based products (this supersedes EN 335-3:1995).

CEN/TS 1099 - Plywood: Biological Durability. Guidance for assessment of plywood for use in different Use Classes.

EN 635-2 - Classification by surface appearance Part 1: General, Part 2: Hardwood.

The factors of exterior exposure that can be significant to the performance of plywood are:

- Rain (particularly wind-driven) and where drying-out is slow.
- Fluctuations in relative humidity.
- Sunlight, particularly on south-facing aspects and dark coloured surfaces.

SPECIFICATION

Backed by the RIBA, NBS Source is the new digital platform that integrates RIBA Product Selector, NBS Bim Library and NBS Plus providing a unified source of high quality, enhanced, manufacturer product data that will integrate seamlessly into your specification. **source.thenbs.com**

Hanson Plywood has a range of high-quality plywood products listed within NBS Source that provides specifiers with all the tools and digital information needed to find, select and specify the correct product to meet project requirements.

www.hanson-plywood.co.uk | www.theplywoodspecifiersguide.co.uk



Scan and take a look around our **virtual showroom**



RIBA APPROVED CPD

Hanson Plywood is proud to form part of the Approved RIBA CPD Providers Network offering a unique and informative CPD entitled:

'PLYWOOD: A DEFINITIVE GUIDE TO SPECIFICATION'

The seminar focuses on:

- The key features and origination of plywood within a global context.
- The legal and environmental framework that impacts on plywood specification.
- The key aspects and variability of the plywood manufacturing process.
- The origination of Marine Plywood and the disconnect with current European Plywood Standards.
- The European Technical Standards that underpin robust plywood specification.
- The key features of the different birch plywood face grades available.
- Reaction to Fire European Standards applicable to plywood.

To book your CPD please call 01422 330444 and talk to our specification advisor

QUICK REFERENCE GUIDE - PLYWOOD

APPLICATION PRODUCTS	TYPICAL APPLICATION	USE CLASS (SEE DEFINITIONS)	APPLICABLE STANDARD	MINIMUM REQUIREMENTS
 PERFORMANCE Plywood® BIRCH Plywood SP101 Flooring Plywood® POPLAR PLYWOOD SOFTWOOD Plywood Far Eastern Type Plywood (Malaysian/Indonesian/Chinese)	Internal applications with minimal exposure to moisture. All internal joinery, flooring underlay, pipe boxing, doors, hatches, weight saving applications etc.	1 - Dry	EN 13986 - Wood-based panels for use in construction EN 636:2012+A1:2015 Plywood-specifications	CE marked Class 1
 PERFORMANCE Plywood® BIRCH Plywood SP101 Flooring Plywood® SOFTWOOD Plywood Far Eastern Type Plywood (Malaysian/Indonesian/Chinese)	Internal joinery with temporary exposure during construction. Flooring, walls, roof decking, linings, hoardings, protection etc.	2 - Humid	EN 13986 - Wood-based panels for use in construction EN 636:2012+A1:2015 Plywood-specifications EN 314-2 - Plywood bond quality	CE marked Class 2 Class 2
 PERFORMANCE Plywood®	All internal and external joinery which may be submitted to long term exposure to wetting/weather. Construction - Floors, walls, roof decking, soffits, linings, signs etc.	3 - Exterior	EN 13986 - Wood-based panels for use in construction EN 636:2012+A1:2015 Plywood-specifications EN 314-2 - Plywood bond quality EN 335 - Durability of wood and wood-based panel products	CE marked Class 3 Class 3 Use Class 2* Use Class 3*

* This is a perforated pull out document *

Plywood for permanent use in construction must demonstrate compliance with the Construction Products Regulation (CPR) via the use of CE marking.
This table is designed for guidance only and all specific performance requirements for particular projects should be cross checked in detail.
*Where durability cannot be confirmed, further treatment may be required to achieve satisfactory performance in these areas.
Please note, this table covers plywood products only.
OSB, MDF and chipboard will be the best choice for certain applications.

All products are reviewed by a robust Due Diligence System in line with UKTR (UK Timber Regulation) requirements - FSC® and PEFC certified material available on request



Hanson Plywood Limited Drakes Industrial Estate, Shay Lane, Ovenden, Halifax, HX3 6RL
Tel: 01422 330444 | Email: panels@hanson-plywood.co.uk | **www.hanson-plywood.co.uk**



H PERFORMANCE Plywood®

Optimum performance classification and fully compliant for use in construction applications. **EN 636 Use Class 3, EN 314-2 Class 3 Exterior Glue.**

Applications - construction, roofing, flooring, wall panelling, joinery, portable buildings, vehicle body building and all applications which demand full compliance with exterior classification standards.

H POPLAR PLYWOOD

PANGUANETA
Plywood For Life

A unique range of the very highest quality poplar plywood.

Sustainable, lightweight, and extremely versatile for applications across many industries.

A No Added Formaldehyde (NAF) variant of this product is available.

Applications - caravans, motorhomes, leisure vehicles, boat/yacht building, laminating, veneering, furniture, shop & bar fitting, exhibitions, scenery and staging, general joinery.

H BIRCH Plywood

An extensive range of birch plywood carrying very specific technical information including loading/bending strength data.

Thickness range 3mm up to 50mm.

Special thin panel range (0.4mm-6.0mm).

Birch products are subject to availability, please contact our sales office to discuss further: 01422 330444

Applications - construction, roofing, flooring, wall panelling, shop & bar fitting, furniture, pattern making, vehicle body building, laminating, veneering, musical instruments, laser cutting, toy and model making, engineering.

H SOFTWOOD Plywood

Practical panels comprised of coniferous tree species and created with structural purposes and applications in mind.

Applications - construction, packaging, roofing, flooring, hoarding, formwork, container lining, fencing, wall sheathing.

H SP101 Flooring Plywood®

Manufactured with specific attention to accurate dimensional tolerances and surface quality. **Fully compliant with BS 8203:2017-Plywood Annex A.**

To find out more you can visit SP101.CO.UK

Applications - flooring underlay, laminating, veneering, joinery, furniture, shop and bar fitting.

H FIRE RETARDANT Panels

A range of panels manufactured to reduce the spread of flames and delay ignition in the event of a fire with either **Euroclass C** or **Euroclass B** fire performance if required.

Applications - entrances/foyers, offices, public libraries, schools, court houses, hospitals, cinemas, shopfitting, bar fitting, shipbuilding applications.

HARDWOOD PLYWOOD



Optimum performance classification and fully compliant for use in construction applications.

SPECIFICATION - EN 636-3 S • EN 314-2 Class 3 Glue Bond • E1 Formaldehyde Class • CE Marked • FSC® Certified • FLEGT Licensed								
↕ SIZE	3.6mm	5.5mm	9mm	12mm	15mm	18mm	22mm	25mm
2440 x 1220mm	✓	✓	✓	✓	✓	✓	✓	✓

USES - Construction, portable buildings, roofing and flooring, joinery, vehicle body building



Specifically manufactured with accurate dimensional tolerances and surface quality. Superior medium to lightweight plywood suitable for a variety of applications which demand a specific fit-for-purpose panel.

SPECIFICATION - BS 8203:2017* • EN 314-2 Class 3 Glue Bond • E1 Formaldehyde Class • CE marked • FSC® Certified Stock Available • FLEGT licensed						
*Thicknesses 5.5mm and up are BS 8203:2017 - Plywood Annex A Installation of Resilient Floor Coverings - Code of Practice complaint.						
↕ SIZE	3.6mm	5.5mm	9mm	12mm	18mm	25mm
1220 x 610mm	✓	✓	-	-	-	-
2440 x 1220mm	✓	✓	✓	✓	✓	✓

USES - Flooring, laminating, veneering, joinery, furniture



A multi-use structural hardwood plywood suitable for a wide range of industries.

SPECIFICATION - EN 636-3 S • EN 314-2 Class 3 Glue Bond • E1 Formaldehyde Class • CE marked • FSC® Certified							
↕ SIZE	6mm	9mm	12mm	15mm	18mm	25mm	30mm
2440 x 1220mm	✓	✓	✓	✓	✓	✓	✓
3100 x 1220mm	-	-	-	-	✓	✓	✓
3100 x 1530mm	-	-	-	-	✓	✓	-

USES - General joinery, boat building, panels in exposed areas

MALAYSIAN PLYWOOD

A reliable general purpose plywood.

SPECIFICATION - EN 636-2 • EN 314-2 Class 3 Glue Bond • E1 Formaldehyde Class • CE marked • PEFC or FSC® Certified							
↕ SIZE	3.6mm	5.5mm	9mm	12mm	15mm	18mm	25mm
2440 x 1220mm	✓	✓	✓	✓	✓	✓	✓

USES - Joinery, shopfitting, portable buildings, construction, vehicle body building, roofing, flooring, furniture

CHINESE HARDWOOD PLYWOOD (IMPROVED CLASSIFICATION)

General purpose panels. Customers are advised to check suitability prior to purchasing this product.

SPECIFICATION - EN 636-2 • EN 314-2 Class 2 Glue Bond • E1 Formaldehyde Class • CE marked • FSC® Certified								
↕ SIZE	3.6mm	5.5mm	9mm	12mm	15mm	18mm	22mm	25mm
2440 x 1220mm	✓	✓	✓	✓	✓	✓	✓	✓

USES - Joinery, shopfitting, portable buildings, construction, furniture

CHINESE HARDWOOD PLYWOOD (STANDARD CLASSIFICATION)

General purpose panels. Customers are advised to check suitability prior to purchasing this product.

SPECIFICATION - EN 636-2 • EN 314-2 Class 2 Glue Bond • E1 Formaldehyde Class • CE marked								
↕ SIZE	3.6mm	5.5mm	9mm	12mm	15mm	18mm	22mm	25mm
2440 x 1220mm (FSC®)	✓	✓	✓	✓	✓	✓	✓	✓
3050 x 1220mm	✓	✓	✓	✓	✓	✓	✓	✓
3050 x 1525mm	✓	✓	✓	✓	✓	✓	✓	✓

USES - Joinery, shopfitting, portable buildings, construction, furniture

SOFTWOOD PLYWOOD

PINE/SPRUCE PLYWOOD

Species of softwood plywood for various applications.

SPECIFICATION - EN 636-2 S • EN 314-2 Class 3 Glue Bond • E1 Formaldehyde Class • CE marked • FSC® or PEFC Certified

🔍 TYPE	↕ SIZE	9mm	12mm	15mm	18mm	24mm
FSC® C+/C Brazilian Pine Plywood	2440 x 1220mm	✓	✓	✓	✓	✓
PEFC Finnish Spruce	2440 x 1220mm	-	✓	-	✓	✓

USES - General joinery, boat building, panels in exposed areas

TONGUED AND GROOVED STRUCTURAL SOFTWOOD PLYWOOD

Species of softwood plywood for various applications.

SPECIFICATION - EN 636-2 S • EN 314-2 Class 3 Glue Bond • E1 Formaldehyde Class • CE marked • FSC® Certified			
🔍 TYPE	↕ SIZE	18mm	21mm
T and G 4 Edges	2400 x 600mm	✓	✓
T and G 2 Long Edges	2440 x 1200mm	✓	-

USES - Construction, packaging, roofing, flooring, hoarding, formwork



Combines significant weight saving with high quality faces. Extremely accurate thickness and dimensional tolerances.

POPLAR THROUGHOUT PLYWOOD

SPECIFICATION - EN 636-1 • EN 314-2 Class 1 Glue Bond • E1 Formaldehyde Class • CE marked • PEFC (FSC® available on request)									
THICKNESS	3mm	4mm	6mm	9mm	12mm	15mm	18mm	25mm	30mm
GRADE	AB/BB	AB/BB	AB/BB	AB/BB	B/BB	B/BB	B/BB	B/BB	B/BB
2500 x 1220mm	✓	✓	✓	✓	✓	✓	✓	✓	✓

USES - Veneering, laminating, joinery, shopfitting, furniture, exhibitions, stage sets, laser cutting, model making, automotive application

*Larger sizes available on request

ILOMBA FACED POPLAR PLYWOOD

SPECIFICATION - EN 636-1 • EN 314-2 Class 1 Glue Bond • E1 Formaldehyde Class • CE marked • PEFC (FSC® available on request)									
THICKNESS	3mm	6mm	9mm	12mm	15mm	18mm	25mm	30mm	40mm
GRADE	B/BB	B/BB	B/BB	B/BB	B/BB	B/BB	B/BB	B/BB	B/BB
2500 x 1220mm	✓	✓	✓	✓	✓	✓	✓	✓	✓

BIRCH FACED POPLAR PLYWOOD

SPECIFICATION - EN 636-1 • EN 314-2 Class 1 Glue Bond • E1 Formaldehyde Class • CE marked • PEFC (FSC® available on request)									
THICKNESS	3mm	6mm	9mm	12mm	15mm	18mm	25mm	30mm	40mm
GRADE	B/BB	B/BB	B/BB	B/BB	B/BB	B/BB	B/BB	B/BB	B/BB
2440 x 1220mm	✓	✓	✓	✓	✓	✓	✓	✓	✓

SPECIALITY POPLAR/ILOMBA PANELS

We are also able to offer a range of speciality Poplar Plywood panels that present a variety of solutions for many applications. These products include:

- **Pangua** - Prime - Plywood primed on both sides with acrylic water based paint which eliminates a step in the finishing process.
- **Pangua** - Lam - Plywood coated with CPL or HPL with thicknesses from 0.3mm to 0.9mm.
- **Multi-Veneer Poplar Plywood** - Featuring high quality edge detailing and significant weight saving with thicknesses from 9mm - 40mm.
- **Panguaneta Bravo** - Bravo Birch, Bravo Maple, Bravo Poplar
Bravo plywood is an innovative and modern plywood developed as an alternative to birch. High quality faces with a multi-ply poplar/eucalyptus combi core.

PLEASE CHECK
AVAILABILITY
WITH OUR
SALES TEAM



SPECIFICATION - EN 636-1 • EN 314-2 Class 1 Glue Bond • E1 Formaldehyde Class • CE marked • PEFC (FSC® available on request)

THICKNESS	3mm	4mm	6mm
2500 x 1220mm	✓	✓	✓

USES - Toy and model making, arts and crafts, printing, laser cutting

PURE GLUE POPLAR PLYWOOD

All the attributes of Poplar Throughout Plywood with the added benefit of a scientifically formulated and eco-friendly glue line. Available to forward order.

SPECIFICATION - EN 636-1 • EN 314-2 Class 1 Glue Bond • NAF (No Added Formaldehyde)* • CE Marked • PEFC (FSC® available on request) *Also suitable for projects requiring an E1 or CARB PHASE 2 Formaldehyde classification									
THICKNESS	3mm	6mm	9mm	12mm	15mm	18mm	25mm	30mm	40mm
GRADE	B/BB	B/BB	B/BB	B/BB	B/BB	B/BB	B/BB	B/BB	B/BB
2500 x 1220mm	✓	✓	✓	✓	✓	✓	✓	✓	✓

USES - Furniture, display, automotive, boat building, public buildings
*Larger sizes available on request

FIRE RETARDANT POPLAR PLYWOOD (PANGUA-FIRE)

SPECIFICATION - Euroclass B - s1, d0 • EN 636-1 • EN 314-2 Class 1 Glue Bond • E1 Formaldehyde Class • CE Marked • PEFC (FSC® available on request)	
THICKNESS	6mm 18mm
GRADE	B/BB B/BB
2500 x 1220mm	✓

USES - Please contact our team regarding specific applications and requirements

*Other thicknesses and sizes available on request

PANGUA-FORTE

Pangua-Forte Plywood is an engineered innovative product of outstanding durability designed for resistance to wood decay agents.

SPECIFICATION - EN 636-3 • EN 314-2 Class 3 Glue Bond • E1 Formaldehyde Class • CE Marked • PEFC (FSC® available on request)						
THICKNESS	9mm	12mm	15mm	18mm	25mm	30mm
2500 x 1220mm	✓	✓	✓	✓	✓	✓

USES - Typical applications include: wooden houses, urban furniture, marine industry, playground, garden structures, packaging



PANGUANETA
Plywood For Life

EACH FOR ALL

Sustainable, lightweight and extremely versatile
for applications across many industries.

www.panguaneta.com

PANGUANETA PLYWOOD

VALUE CHAIN

STRATEGIC PARTNERSHIP
SUPPLIERS

**SHORT
SUPPLY
CHAIN**

**CERTIFIED
PROCESS**

PRODUCT
INNOVATION

**WORKING
TOWARDS
CARBON
NEUTRALITY**

**SAFE
EVERY
STEP OF
THE WAY**

ENVIRONMENTAL
PRODUCT DECLARATION

**PRODUCTS
LIFE CYCLE
ASSESSMENT**

RAW MATERIAL

**CERTIFIED
POPLAR PLANTATIONS
MADE IN ITALY**

A sustainable supply chain to ensure the certified origin of the raw material. A responsible production process granting a consistent quality and service. Our values provide a virtuous model to identify, develop and promote concrete indicators to promote awareness and obtain an increasingly environmentally-friendly plywood.



PANGUANETA

Plywood For Life



GRADES & PROPERTIES

Birch Plywood is graded dependant on face quality. The core construction is the same regardless of grade

B OR S+ FACE

The highest quality birch plywood commercially available. Solid veneers with limited discolouration, no open defects or plug repairs. Suitable for high quality paint, stain or lacquer finish where the end product is intended to be open to display.

*Sometimes referred to as S+ grade dependant on manufacturer.

BB FACE

Mainly solid veneers with only small repaired veneer splits and pin knots allowed. Larger open knots are repaired with wooden plugs/patches.

The shape of the plug repair can be described as 'oval' or 'butterfly' dependant on manufacturer and the number of repairs is limited to eight per square metre. Some solid light and dark knots are admissible. Generally considered as 'paint grade' and used where a solid surface is needed but the visual aspects are not so critical.

CP FACE

Generally as BB grade but with the possibility of a greater number of repairs, open defects and discolouration. This grade can also arise from the rejects of higher grades. Suitable for applications where a strong, stable core is needed but where it is accepted the face quality can vary.

C FACE

The lowest quality birch plywood. Usually unsanded and allows unlimited open defects. Suitable for applications where a strong, stable core is needed but face grade is not important.

*All images are for indicative purposes only.

QUICK REFERENCE GUIDE - BIRCH PLYWOOD

Typical values collated from Polish, Latvian and Finnish production standards

THICKNESS	3mm	4mm	5mm	6mm	8mm	9mm	12mm	15mm
TYPICAL GRADES	B/BB, S+/BB, BB/BB, BB/CP, CP/CP, C/C							
DENSITY (KG/M³)	700kg/m³							
WEIGHT/8X4 (KG)	6.2	8.3	10.4	12.5	16.6	18.7	25	31.2
NUMBER OF PLIES	3	3	4/5	5	6/7	7	9	11
GLUING OPTIONS	E1 Int	E1 Int/Ext	E1 Int	E1 Int/Ext	E1 Int	E1 Int/Ext	E1 Int/Ext	E1 Int/Ext
THICKNESS TOLERANCE FOR SANDED PANELS (MM)	+0.3/-0.4	+0.3/-0.5	+0.4/-0.5	+0.4/-0.5	+1/-0.5	+0.4/-0.6	+0.5/-0.7	+0.6/-0.8

THICKNESS	18mm	21mm	24mm	27mm	30mm	35mm	40mm	45mm	50mm
TYPICAL GRADES	B/BB, S+/BB, BB/BB, BB/CP, CP/CP, C/C								
DENSITY (KG/M³)	700kg/m³								
WEIGHT/8X4 (KG)	37.5	43.7	50	56.2	62.5	72.9	83.5	93.8	105
NUMBER OF PLIES	13	15	17	19	21	25	29	31	36
GLUING OPTIONS	E1 Int/Ext	E1 Int/Ext	E1 Int/Ext	E1 Ext	E1 Ext	E1 Ext	E1 Ext	E1 Ext	E1 Ext
THICKNESS TOLERANCE FOR SANDED PANELS (MM)	+0.7/-0.9	+0.8/-1.0	+0.9/-1.1	+1.0/-1.2	+1.1/-1.3	+1.05/- 1.45	+1.2/-1.2	+1.4/-1.8	+ 1.5/- 1.9

*For further detailed information such as structural detail and help with specifications, please contact our technical team.

PRODUCTS SUITABLE FOR A VARIETY OF APPLICATIONS



SOME BIRCH PRODUCTS ARE SUBJECT TO AVAILABILITY. PLEASE CONTACT OUR SALES OFFICE TO DISCUSS FURTHER: 01422 330444



SPECIFICATION - EN 636-2 • EN 314-2 Class 3 Glue Bond • E1 Formaldehyde Class • CE marked • FSC® or PEFC Subject to Availability

THICKNESS	4mm			6/6.5mm			
GRADE	B/BB	BB/BB	BB/CP	B/BB	BB/BB	BB/CP	C/C
2440 x 1220mm	✓	✓	✓	✓	✓	✓	✓
1220 x 2440mm	-	✓	✓	-	✓	-	-
1525 x 3050mm	-	✓	-	-	✓	-	-

THICKNESS	9mm				12mm				
GRADE	B/BB	BB/BB	BB/CP	C/C	B/BB	BB/BB	BB/CP	CP/CP	C/C
2440 x 1220mm	✓	✓	✓	✓	✓	✓	✓	✓	✓
1220 x 2440mm	-	✓	-	-	-	✓	-	-	-
1220 x 3050mm	-	✓	-	-	-	✓	-	-	-
1525 x 3050mm	-	✓	-	-	-	✓	-	-	-

THICKNESS	15mm					18mm					21mm		
GRADE	B/BB	BB/BB	BB/CP	CP/CP	C/C	B/BB	BB/BB	BB/CP	CP/CP	C/C	BB/BB	BB/CP	C/C
2440 x 1220mm	✓	✓	✓	✓	✓	✓	✓	✓	✓	✓	✓	✓	✓
1220 x 2440mm	-	-	✓	✓	-	-	✓	-	-	-	-	-	-
1220 x 3050mm	-	✓	-	-	-	-	✓	-	-	-	-	-	-
1525 x 3050mm	-	✓	-	-	-	-	✓	-	-	-	✓	-	-

THICKNESS	24mm					27mm		30mm		35mm	40mm	45mm	50mm
GRADE	B/BB	BB/BB	BB/CP	CP/CP	C/C	BB/BB	BB/CP	BB/BB	BB/CP	BB/BB	BB/BB	BB/BB	BB/BB
2440 x 1220mm	✓	✓	✓	✓	✓	✓	✓	-	✓	✓	✓	✓	✓
1220 x 2440mm	-	✓	-	✓	✓	-	-	-	✓	-	-	-	✓
1220 x 3050mm	-	✓	-	-	-	-	-	-	-	-	-	-	-
1525 x 3050mm	-	✓	-	-	-	-	-	✓	-	-	-	-	-
1525 x 1525mm	-	-	-	-	-	-	-	-	-	-	-	-	✓

USES - Furniture components, packaging, shopfitting and display cabinets, vehicle body building

*Where B/BB grade is offered S+/BB may be available as an alternative.



INTERIOR GLUED LASER PLYWOOD

SPECIFICATION - EN 636-1 • EN 314-2 Class 1 Glue Bond • E1 Formaldehyde Class • CE marked • FSC® or PEFC Subject to Availability

THICKNESS	3mm			4mm			5mm			6mm			8mm
GRADE	B/BB	BB/BB	C/C	B/BB	BB/BB	C/C	B/BB	BB/BB	C/C	B/BB	BB/BB	C/C	C/C
1525 x 1525mm	✓	✓	✓	✓	✓	✓	✓	✓	✓	✓	✓	✓	✓
THICKNESS	9mm			12mm			15mm			18mm			24mm
GRADE	B/BB	BB/BB	B/BB	BB/BB	C/C	B/BB	BB/BB	C/C	B/BB	BB/BB	C/C	BB/BB	C/C
1525 x 1525mm	✓	✓	✓	✓	✓	✓	✓	✓	✓	✓	✓	✓	✓

THICKNESS	12mm			15mm			18mm		
GRADE	BB/BB			BB/BB			BB/BB		
2440 x 1220mm	✓			✓			✓		
1220 x 2440mm	✓			✓			✓		
1525 x 1270mm	✓			✓			✓		
1525 x 1525mm	✓			✓			✓		
1525 x 1830mm	✓			✓			✓		
1525 x 2440mm	✓			✓			✓		
1830 x 1220mm	✓			✓			-		
1830 x 1270mm	-			-			✓		

USES - Furniture components, packaging, shopfitting and display cabinets, laser cutting for the die industry, model making

AN EXTENSIVE RANGE
OF BIRCH PLYWOOD
FOR MODELS, TOYS
AND CRAFTS



KOSKISEN THIN PLYWOOD



Applicable for design products and other applications when an attractive appearance and lightness, good mechanical properties, laser cutting or demanding machining are required



We at Koskisen process wood into products that will serve as carbon sinks for decades to come.

The raw material for the high-quality thin plywood products is procured from sustainably grown Finnish forests.

Koskisen thin plywood is cross-banded thin plywood, made from rotary cut thin birch veneers.



KOSKISEN THIN BIRCH PLYWOOD



INTERIOR GLUE - LASER PLYWOOD

SPECIFICATION - EN 636-1 • EN 314-2 Class 1 Glue Bond • E1 Formaldehyde Class • CE marked • FSC® or PEFC Subject to Availability

THICKNESS	0.4mm	0.8mm	1mm	1.5mm	2mm	3mm	4mm	5mm	6mm
GRADE	BR/BR	BR/BR	BR/BR	BR/BR	BR/BR	BR/BR	BR/BR	BR/BR	BR/BR
1220 x 1220mm	<input checked="" type="checkbox"/>	<input checked="" type="checkbox"/>	<input checked="" type="checkbox"/>	<input checked="" type="checkbox"/>	<input checked="" type="checkbox"/>	<input checked="" type="checkbox"/>	<input checked="" type="checkbox"/>	<input checked="" type="checkbox"/>	<input checked="" type="checkbox"/>

USES - Models, instruments, toys, furniture, craft work, laser cutting

EXTERIOR GLUE

SPECIFICATION - EN 636-2 • EN 314-2 Class 1 Glue Bond • E1 Formaldehyde Class • CE marked • FSC® or PEFC Subject to Availability

THICKNESS	0.4mm	0.8mm	1mm	1.5mm	2mm
GRADE	AB/B	AB/B	BR/BR	BR/BR	AB/B
1525 x 1525mm	-	<input checked="" type="checkbox"/>	<input checked="" type="checkbox"/>	-	-
1220 x 1220mm	<input checked="" type="checkbox"/>	-	<input checked="" type="checkbox"/>	<input checked="" type="checkbox"/>	<input checked="" type="checkbox"/>
2400 x 1200mm	-	-	-	<input checked="" type="checkbox"/>	-
1200 x 2400mm	-	-	-	<input checked="" type="checkbox"/>	-

USES - Models, instruments, toys, furniture, shopfitting, engineering, pattern makers

KOSKISEN BIRCH VENEER

THICKNESS	1.5mm
GRADE	CD
1600 x 1600mm	<input checked="" type="checkbox"/>
1600 x 530mm	<input checked="" type="checkbox"/>

TECHNICAL/COATED PLYWOOD

CONCRETE FORMWORK PANELS

Reusable paper/film coated panels for use in forming concrete structures.

SPECIFICATION - FSC® or PEFC Certified

TYPE	SIZE	6mm	9mm	12mm	18mm	24mm
Brown Phenolic Film Faced Birch	2440 x 1220mm	-	-	<input checked="" type="checkbox"/>	<input checked="" type="checkbox"/>	<input checked="" type="checkbox"/>
Black Phenolic Film Faced Birch	2440 x 1220mm	-	<input checked="" type="checkbox"/>	-	-	-
MDO Softwood	2440 x 1220mm	-	-	-	<input checked="" type="checkbox"/>	-
Chinese Phenolic Film Faced Hardwood	2440 x 1220mm	-	-	-	<input checked="" type="checkbox"/>	-

USES - Formation of concrete structures

E: panels@hanson-plywood.co.uk T: 01422 330444

PHENOL FILM FACED BIRCH PLYWOOD

High quality birch panels faced with slip resistant mesh/hexagon/diamond patterns.

SPECIFICATION - FSC® or PEFC Certified								
TYPE	SIZE	6.5mm	9mm	12mm	15mm	18mm	21mm	24mm
Brown Mesh/Smooth	1220 x 2440mm	-	✓	✓	✓	✓	✓	✓
	1525 x 3050mm	-	-	✓	-	✓	-	-
Black Hexa/Smooth	1220 x 2500mm	✓	✓	✓	-	✓	-	-
Brown Hexa/Smooth	1220 x 2500mm	-	-	✓	-	✓	-	-
Black Diamond/Smooth	1220 x 2440mm	-	✓	-	-	-	-	-
Grey Hexa/Smooth	1220 x 2440mm	-	✓	✓	-	-	-	-
Brown Metsä Wood Top	2440 x 1220mm	-	-	-	-	✓	-	-
Grey Metsä Wood Top	2440 x 1220mm	-	✓	✓	-	-	-	-

USES - Vehicle body building, stages, flight cases, horseboxes, platforms, walkways

KOSKIFUTURA POLYPROPYLENE FACED BIRCH THROUGHOUT PLYWOOD

Sealed edge birch plywood with a polypropylene coated face, ideal for use in external furniture, toys & playground construction.

SPECIFICATION - EN 636-2 • EN 314-2 Class 3 Glue Bond • E1 Formaldehyde Class • CE marked • PEFC Certified		
TYPE	SIZE	12mm
Green	1220 x 2500mm	✓

*Other colours, thicknesses and sizes available to special order

MELAMINE FACED BIRCH PLYWOOD

Sealed edge birch panels with a smooth melamine face, ideal for creative uses.

SPECIFICATION - EN 636-2 • EN 314-2 Class 3 Glue Bond • E1 Formaldehyde Class • CE marked • FSC® or PEFC Certified

TYPE	SIZE	6.5mm	12mm	15mm	18mm
White Melamine 2s*	2440 x 1220mm	-	<input checked="" type="checkbox"/>	-	<input checked="" type="checkbox"/>
Grey Melamine 2s	2440 x 1220mm	<input checked="" type="checkbox"/>	<input checked="" type="checkbox"/>	<input checked="" type="checkbox"/>	<input checked="" type="checkbox"/>

USES - Furniture, shopfitting

*Other colours, thicknesses and sizes available to special order

POLYESTER FACED HARDWOOD PLYWOOD

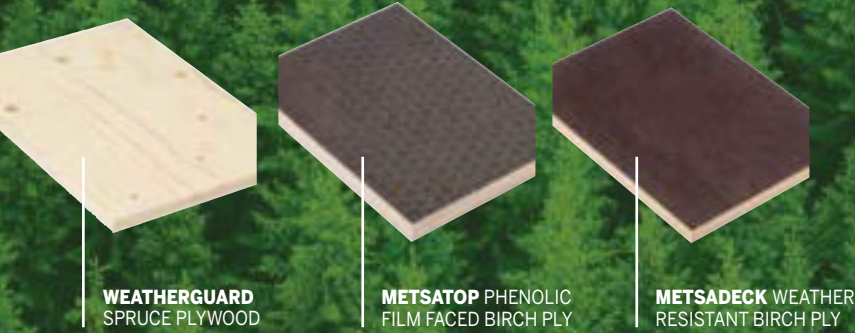
Polyester faced plywood used for the lining of commercial vehicles.

TYPE	SIZE	3.6mm	5.5mm
White Gloss	2440 x 1220mm	✓	-
White Matt	2440 x 1220mm	✓	-
Light Grey	2440 x 1220mm	-	✓

USES - Vehicle lining and portable buildings

Your partner
in sustainable
growth

METSÄ WOOD UK ARE PROUD TO BE WORKING
CLOSELY WITH HANSON PLYWOOD ON OUR
METSÄ GROUP PRODUCTS:



Our Nordic wood is perfect for building the future.
Sustainable, reliable, renewable

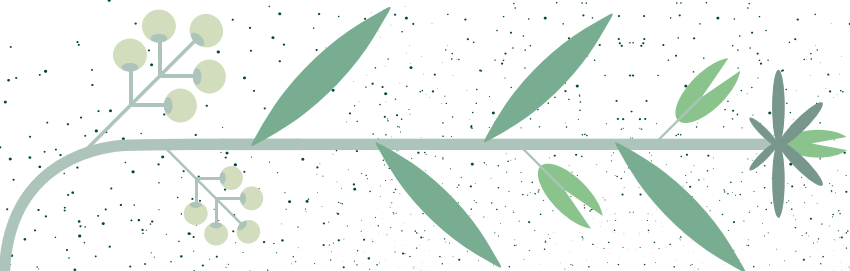
www.metsawood.com



WE SHAPE OUR BUSINESS
THROUGH DECISIONS THAT
SHAPE OUR WORLD

APPLICABLE STANDARDS

- BS EN 300 – OSB definition, classification and specification



OSB

OSB consists of resin-bonded sheets made up of small, thin strands of wood, compressed into layers to form a mat. It has good dimensional stability with no knots or voids in the structure.

Different grades and thicknesses are available, which means that this product is suitable for use in a wide range of structural and non-structural applications.

A complete range of OSB, including FSC® certified products, is available for immediate delivery ex-stock.

OSB/3	32
SmartPly Ultima	32
SmartPly Propassiv	32
SmartPly SiteProtect & SiteProtect Plus	32



Scan me to find out more

QUICK REFERENCE GUIDE - OSB

TYPE	APPLICATION AND CLIMATIC CONDITIONS	USE CLASSES (EN 335)
OSB/1	Non-structural, interior fitments including furniture	Use Class 1
OSB/2	Non-structural applications	Use Class 1
OSB/3	Structural applications suitable for use in humid conditions	Use Class 1 and 2
OSB/4	Heavy-duty structural applications in humid conditions	Use Class 1 and 2

OSB/3

Structural applications suitable for use in humid conditions.

SPECIFICATION - EN 300 • FSC® Certified • CE Marked							
SIZE	8mm	9mm	11mm	15mm	18mm	22mm	24mm
2440 x 1220mm	✔	-	✔	✔	✔	✔	✔
2400 x 1197mm	-	✔	✔	✔	✔	-	-
2697 x 1197mm	-	✔	✔	-	-	-	-
2400 x 600mm (Tongue & grooved on 4 edges)	-	-	-	-	✔	-	-

USES - Roof decking, roof sarking, wall sheathing, flooring, packaging, hoardings, signboards, portable buildings

SMARTPLY ULTIMA

High performance engineered wood panel suitable for the most demanding structural applications.

SPECIFICATION - EN 300 • FSC® Certified • CE Marked	
SIZE	18mm
2440 x 1220mm	✔

SMARTPLY PROPASSIV

Structural OSB panel with integrated vapour control and air barrier properties for use as structural sheathing in timber frame structures.

SPECIFICATION - EN 300 • FSC® Certified • CE Marked	
SIZE	12.5mm
2397 x 1197mm	✔

USES - Airtight OSB/3 panel for use in Passivhaus buildings

SMARTPLY SITEPROTECT AND SITEPROTECT PLUS

Pre-coated site hoarding panel designed to save both time and money.

SPECIFICATION - EN 300 • FSC® Certified • CE Marked		
TYPE	SIZE	18mm
Site Protect	2440 x 1220mm	✔
SiteProtect Plus (coated 2 sides)	2440 x 1220mm	✔

USES - Site hoarding and protection

EVERYTHING
WE DO IS
ROOTED IN
SUSTAINABLE
SOLUTIONS



MEDITE SMARTPLY
BUILDING THE FUTURE

Sourced from sustainably managed forests, **MEDITE SMARTPLY**'s engineered wood panels are proof of our commitment to creating products that contribute to sustainable and healthier environments. Renowned for their versatility as much as their durability, our products are suitable for a wide range of applications.

By maintaining a consistent stance on sustainability,

MEDITE SMARTPLY's environmentally-conscious products add value throughout the building supply chain, storing carbon throughout their lifetime.

Our sustainable building solutions are supported in our company ambition to move towards carbon neutrality by 2030 through scopes 1 & 2 emissions and to becoming a net zero manufacturing company by 2050.



To find out more about our commitment to the environment and a glossary of our terms, go to www.mdfosb.com/sustainability



Quick Reference Guide - MDF

Trade Term	Class	Typical average density	Application and climatic condition	Use Class (EN335)	General purpose joinery	Simple designs with minimal profile	Humid conditions	Architectural mouldings - skirting, architraves	Deep rooted profiles (e.g. membrane pressed PVC doors)	Designs with advanced deep rooted profiles and printed finishes
Standard	MDF	650kg/m ³	General purpose boards for dry conditions	Use Class 1	✓	✓	✗	✓	✗	✗
Trade	L.MDF	625kg/m ³	Light MDF boards for dry conditions	Use Class 1	✓	✓	✗	✗	✗	✗
Ultralight	UL2.MDF	520kg/m ³	Ultra-light MDF boards for dry conditions	Use Class 1	✓	✓	✗	✗	✗	✗
Moisture Resistant	MDF.H	720kg/m ³	General purpose boards for humid conditions	Use Class 1 and 2	✓	✓	✓	✓	✗	✗
Exterior	MDF.H-2	770kg/m ³	General purpose boards for exterior conditions	Use Class 1, 2 and 3	✓	✓	✓	✓	✓	✓

WE BELIEVE FRESH AIR IS WORTH FIGHTING FOR

APPLICABLE STANDARDS

- BS EN 622-1 – Fibreboards specifications: general requirements
- BS EN 622-2 – Fibreboards specifications: requirements for Hardboard
- BS EN 622-5 – Fibreboards specifications: requirements for Dry Process Boards (MDF)



MDF - HDF - HARDBOARD

MDF is an engineered wood product consisting of softwood fibres bonded together under high heat and pressure. MDF is a very smooth, high quality board with an equal density across all of the panel. It is easily machinable and has no natural defects such as knots as seen in other panel products.

Hardboard is a cost effective, wet processed fibreboard that is characterised by its high density of ≥900 kg/m³ in contrast with softboard and mediumboard. It is usually bonded together by the adhesive properties of the wood fibres (although oil, wax or other synthetic resins can sometimes be used).

Hanson Plywood Ltd are one of the largest stockists of MDF In the UK and offer products from all the major manufacturers. A full range of MDF types, sizes and thicknesses are immediately available ex-stock.

Medium Density Fibreboard	36
Matchboard	36
Black MDF	36
Trade	38
Ultralight	38
Moisture Resistant	38
Premium Moisture Resistant	38
Exterior	38
Hardboard	38



Scan me to find out more

MEDIUM DENSITY FIBREBOARD

For creative applications such as routing and moulding in addition to general purpose construction and joinery.

SPECIFICATION - EN 622-5 MDF • FSC® or PEFC Certified • CE Marked

SIZE	2mm	2.5mm	3mm	4mm	6mm	9mm	12mm	15mm	18mm
2440 x 1220mm	☑	☑	☑	☑	☑	☑	☑	☑	☑
2440 x 1525mm	-	-	-	-	☑	-	☑	-	-
2440 x 1830mm	-	-	-	-	-	-	-	-	☑
3050 x 1220mm	☑	☑	☑	☑	☑	☑	☑	☑	☑
3050 x 1525mm	-	-	-	-	-	-	☑	☑	☑

SIZE	22mm	25mm	30mm	36mm	38mm	45mm	50mm	70mm
2440 x 1220mm	☑	☑	☑	☑	☑	☑	☑	☑
2440 x 1525mm	-	-	-	-	-	-	-	-
2440 x 1830mm	-	☑	☑	-	-	-	-	-
3050 x 1220mm	☑	☑	☑	☑	☑	☑	☑	☑
3050 x 1525mm	-	☑	-	-	-	-	-	-

USES - Furniture, shopfitting, wall panelling, exhibition displays, public buildings, toys

*More sizes and thicknesses available to order, please contact our sales department for more information

MATCHBOARD MDF

Pre-grooved moisture resistant MDF available with various profiles. Other sizes/thicknesses are available to special order.

SPECIFICATION - EN 622-5 MDF.H • FSC® Certified • CE Marked

SIZE	TYPE	9mm	18mm
2440 x 1220mm	'W' Profile Matchboard on MR MDF	☑	☑
2440 x 1220mm	'W' Profile White Primed Matchboard on MR MDF	☑	-

USES - Furniture, model making

BLACK MDF

High density, moisture resistant MDF board Black throughout with a hard, fine and smoothly sanded surface.

SPECIFICATION - EN 622-5 MDF.H • PEFC Certified • CE Marked

SIZE	6mm	9mm	12mm	18mm	25mm
2440 x 1220mm	☑	☑	☑	☑	☑
3050 x 1220mm	☑	☑	☑	☑	☑

USES - Furniture, model making, shopfitting, exhibitions, display boards.



Premium quality standard and specialty MDF

- Standard and moisture resistant range
- Light and full density fire retardant range available, to Euroclass B specification
- Black and grey coloured-in-core range available in a range of finishes

- CARB II and NAF low-formaldehyde options
- All board types can be supplied with a prime coating
- Compliant with both PEFC and FSC chain of custody schemes
- Sustainably produced using 100% recovered wood

Pick up our stock program from Hanson Plywood or visit www.unilinpanels.com.

 **UNILIN**
unilinpanels.com



Designers and artists with broad imaginations, architects and specifiers across all of the nations, from wardrobes to beds our quality can't be denied, one of our innovative products can even be used outside. Outdoor kitchens and games, a summerhouse withstands all kinds of weather all the year round.

Visit meditemakesitreal.com for more information.
Dreamers welcome!

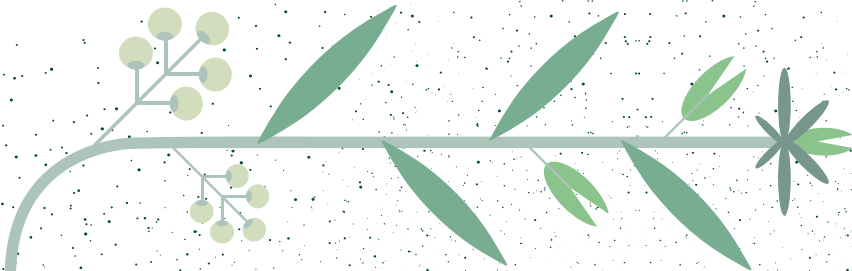
Through the heat of the summer into cold winter chill, still a half century later **MEDITE makes it real.**

Join the **MEDITE MDF community online to receive the latest updates. Sign up to receive a free gift.**



MEDITE®

NET ZERO OCCURS WHEN THE
TOTAL GREENHOUSE GAS EMISSIONS
RELEASED INTO THE ATMOSPHERE
AND THE TOTAL AMOUNT OF
GREENHOUSE GAS EMISSIONS
REMOVED FROM THE ATMOSPHERE
ANNUALLY ARE EQUAL



CHIPBOARD

Particleboard, or chipboard, consists of woodchips compressed together with resin. It has smooth surfaces without knots or voids. Most chipboards incorporate recycled chipped timber, of which the proportion used in UK manufactured panels is typically between 65%-70%.

Different grades and thicknesses are available, enabling the product to be used in a variety of structural and non-structural applications.

P2 Furniture Grade	42
P5 Flooring	42
P6 Flooring	42



Scan me to find
out more

QUICK REFERENCE GUIDE - CHIPBOARD

TYPE	APPLICATION AND CLIMATIC CONDITIONS	USE CLASSES (EN 335)
P1	Internal, non-structural applications	Use Class 1
P2	Internal, non-structural furniture items	Use Class 1
P3	Non-structural applications similar to those listed under P2 above. However P3 is suitable for use in humid conditions	Use Class 1 and 2
P4	Internal, structural applications	Use Class 1
P5	Structural applications similar to those listed under P4, however P5 is suitable for humid conditions	Use Class 1 and 2
P6	Heavy-duty internal structural applications	Use Class 1
P7	Heavy-duty structural applications in humid conditions	Use Class 1 and 2

P2 FURNITURE GRADE

A versatile and cost-effective chipboard with many uses. A slightly denser and stronger chipboard with finer chips for better quality.

SPECIFICATION - FSC® or PEFC Certified • CE Marked

SIZE	12mm	15mm	18mm	25mm	38mm
2440 x 1220mm	✓	✓	✓	✓	✓
3050 x 1220mm	✓	✓	✓	✓	✓

USES - Furniture, veneering, laminating, general joinery, shopfitting, barfitting

P5 FLOORING

Moisture resistant flooring boards with interlocking tongue and groove.

SPECIFICATION - FSC® or PEFC Certified • CE Marked

TYPE	SIZE	18mm	22mm
Caberfloor/Kronospan	2400 x 600mm	✓	✓
Caberdek (Peel clean)	2400 x 600mm	✓	✓
Cabershield/Kronospan Fast Protect/Egger Protect (Permanent coating)	2400 x 600mm	-	✓

USES - Flooring

We also supply fixing kits including glue and tape. **Please enquire with our sales team for details.**

P6 FLOORING

Heavy-duty internal structural applications.

SPECIFICATION - FSC® or PEFC Certified • CE Marked

SIZE	38mm
2400 x 600mm	✓

USES - Mezzanine flooring



VapourBlock:

- 99% Airtight* (<0,001 m³/m².h.Pa)
- Structural Applications
- Built in vapour and airtight barrier.
- No complicated insulation vapour membrane
- Ideal for applications in timber-frame and in low-energy passive house building.

Made with up to 85% recycled wood!

HydroFlam:

- P5 Structural
- Eco-friendly Fire Retardant
- Moisture-resistant
- B-S2, d0 European Classification
- Compliant with STA guidelines
- Reduced Charring Rate



UNILIN

For further information contact **Price & Pierce Forest Products**

Tel: 01483 221800

E-mail: enquiries@Price-Pierce.co.uk



BLOCKBOARD TIMBER PANELS DOOR BLANKS

Blockboard

Constructed from timber blocks, edge glued and overlaid with veneer to produce a lightweight, flat and stable panel for interior use.

Timber Panels

Constructed from high quality European timbers in one-piece laminated blocks.

These boards are used extensively for furniture manufacture, shopfitting and general joinery where a wide, stable panel is required.

Door Blanks

Door Blanks are the base product used for the fabrication of Fire Rated door sets.

Designers have freedom and flexibility on styling and finishing options including paints, veneers and laminates.

Blockboard	46
Pine Panels	46
Oak Panels	46
Door Blanks	46



Scan me to find
out more

WE WORK WITH OTHERS TO
MAINTAIN ROBUST AND
TRANSPARENT
ENVIRONMENTAL, ETHICAL,
AND TECHNICAL
CONSIDERATIONS

BLOCKBOARD

Lightweight, flat, stable panel for interior use.

Q TYPE	SIZE	18mm
BB Birch Blockboard	2440 x 1220mm	✓
Oak Faced Blockboard	2440 x 1220mm	✓
Ash Faced Blockboard	2440 x 1220mm	✓
Chinese Blockboard	2440 x 1220mm	✓

USES - Furniture, joinery, veneering

SCANDINAVIAN REDWOOD PINE PANELS

Flat, stable, decorative panel for interior use. Edge glued redwood strips bonded to give a stable, wide section panel.

SPECIFICATION - 45mm Lamels • 120 Grit Sanding • PEFC Certified

SIZE	GRADE	9mm	12mm	15mm	18mm	25mm
3000 x 1220mm	A/B	-	-	✓	✓	-
3000 x 750mm	A/B	✓	-	-	-	-
3000 x 600mm	A/B	✓	✓	✓	✓	✓
3000 x 500mm	A/B	-	-	-	✓	-
3000 x 450mm	A/B	-	-	-	✓	-
3000 x 400mm	A/B	-	-	-	✓	-
2400 x 600mm*	A/B	-	-	-	✓	-

USES - Internal joinery, shopfitting, furniture manufacture

*Individually shrink wrapped.

EUROPEAN OAK PANELS

Available in both long and short grain to produce different shapes.

SPECIFICATION - 120 Grit Sanding

Q TYPE	SIZE	18mm
European Oak Panels	2400 x 600mm	✓

USES - Internal joinery, shopfitting, furniture

FLAMEBREAK DOOR BLANKS

Flamebreak is the market leading lightweight door blank for use in new build and refurbishments. Engineered 3 layer light hardwood core for an extremely strong, flat and stable blank.

- PAS 23 and PAS 24 test evidence.
 - Acoustic test evidence up to Rw 35dB.
 - Thermal test evidence.
- BM TRADA Q-Mark approved.
 - 44mm FD30 approximately 40% lighter than standard hardwood core blanks.

PLEASE CONTACT
OUR SALES
TEAM FOR MORE
INFORMATION

www.hanson-plywood.co.uk

Kronobuild® Quality boards
Sustainably made

Global Warming Potential (GWP) in kg CO₂ equivalent



Carbon negative construction boards

* Total GWP including biogenic carbon for Modules A1 – A3 of Life Cycle Analysis (Cradle to Gate). Values from independently verified Environmental Product Declarations (EPDs).

Help reduce environmental impact with the Kronobuild® range of wood-based panels. Manufactured from recycled and best-use residues from controlled sources, they are 100% recyclable and available for fast nationwide delivery. Advanced manufacturing technology provides uniform quality and structural integrity, with diamond tooled precision joints for reliable, functional panels.

For more information or to order samples visit www.kronospan.com

OSB 3

OSB 3 Flooring

Fast Clean

Fast Protect

P5 Particleboard Flooring

Loft boards

MDF

Lightweight MDF

MR MDF

HDF

BBA

BBA

FSC

PEFC

MADE IN BRITAIN

Kronospan, the world's largest manufacturer of wood-based panels and the leader in technical development. Setting high environmental standards comes naturally.

STRENGTH IS FORMED ON
KNOWLEDGE, WE HAVE A DRIVE
TO REDUCE OUR CARBON
FOOTPRINT AND ARE WORKING
TOWARDS CARBON NEUTRALITY
AS A BUSINESS



FLEXIBLE PANELS

Our range of flexible panels allows the design and creation of curves, waves and cylindrical structures with absolute ease.

Plywood	50
MDF	50



Scan me to find
out more

FLEXIBLE PLYWOOD

Used to create curved structures.

SPECIFICATION - EN 314-2-Class 1 Glue Bond

SIZE	3mm	5mm	8mm
2440 x 1220mm - Long Grain	✓	✓	✓
1220 x 2440mm - Cross Grain	✓	✓	✓

USES - Furniture, model making, shopfitting, barfitting, general joinery, stage sets/scenery

FLEXIBLE MDF

Medium density fibreboard pre-grooved to enable flexibility.

SPECIFICATION - EN 622-5 MDF

SIZE	6mm
2440 x 1220mm - Cross Grain	✓

USES - Furniture, model making, shopfitting, barfitting, general joinery, stage sets/scenery

AN EXTENSIVE RANGE
OF FLEXIBLE PANELS
AVAILABLE

- ✓ CHOOSE THE RIGHT PRODUCT FOR APPLICATION
- ✓ RESOURCES AT YOUR FINGERTIPS
- ✓ COMMUNICATE DIRECTLY WITH OUR KNOWLEDGABLE STAFF
- ✓ INDUSTRY SPECIFIC INFORMATION
- ✓ VISIT THE PLYWOOD FLOORING CENTRE
- ✓ DEDICATED PROFESSIONAL & TECHNICAL ZONE
- ✓ ORDER PRODUCT SAMPLES
- ✓ APPLICATION GALLERIES & VIDEOS

VISIT
OUR
VIRTUAL
SHOWROOM
EXPERIENCE



A unique virtual resource for wood-based panel products.

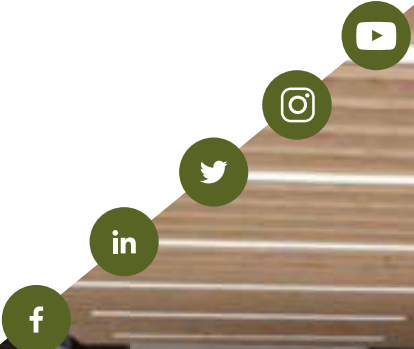
We invite you to take the tour now:

www.hanson-plywood-showroom.co.uk

Hanson Plywood Limited
Drakes Industrial Estate, Shay Lane, Ovenden, Halifax HX3 6RL

Tel: 01422 330444 **Fax:** 01422 330706
Email: panels@hanson-plywood.co.uk

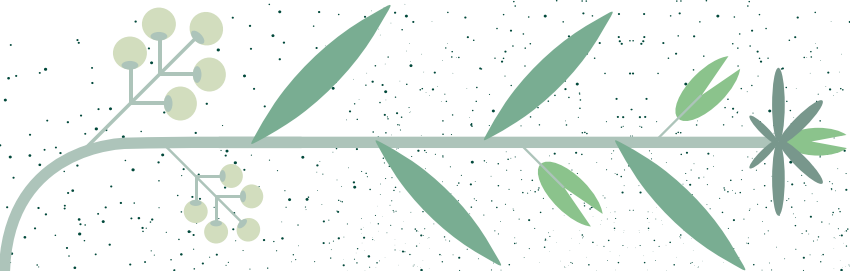
www.hanson-plywood.co.uk



COMMITTED TO
SUSTAINABILITY AND
LOVING OUR PLANET

DECORATIVE PANELS CAN BE:

- C/C - Crown cut
- Q/C - Quarter cut
- A/B - A grade front, B grade back
- A/Bal - A grade front, balancer reverse



DECORATIVE PANELS

Hanson Plywood Ltd supply a diverse range of real wood veneer panel products.

Unlike imitation wood such as melamine or laminate, wood veneers are extremely unique and thus are essential for high-end applications. Each species has its own particular character and no two will exhibit the exact same colour or texture.

Veneers are cut from the log in predominantly two ways to produce different characteristics in colour and grain.

MDF	54
Plywood	54
Birch	54
Blockboard	54
Flexi Veneer	55
Chipboard - Melamine Faced Panels	55
MDF - Melamine Faced Panels	55
Custom Veneering Solutions	56



Scan me to find
out more

DECORATIVE VENEERED MDF

☼ VENEER SPECIES	↔ SIZE	4mm	6mm	10mm	13mm	16mm	19mm	26mm
Ash	2440 x 1220mm	☑	☑	☑	☑	☑	☑	☑
Ash	2440 x 1830mm	-	-	-	-	-	-	☑
Ash	3050 x 1220mm	-	-	-	-	-	☑	☑
Steamed Beech	2440 x 1220mm	☑	☑	☑	☑	☑	☑	☑
Steamed Beech	2440 x 1830mm	-	-	-	-	-	-	☑
American Cherry	2440 x 1220mm	☑	☑	☑	☑	☑	☑	☑
Galician Pine	2440 x 1220mm	☑	☑	☑	☑	☑	☑	☑
American Maple	2440 x 1220mm	☑	☑	☑	☑	☑	☑	☑
European Oak	2440 x 1220mm	☑	☑	☑	☑	☑	☑	☑
European Oak	2440 x 1830mm	-	-	-	-	-	-	☑
European Oak	3050 x 1220mm	-	-	-	☑	-	☑	☑
Sapele C/C	2440 x 1220mm	☑	☑	☑	☑	☑	☑	☑
Sapele Q/C	2440 x 1220mm	☑	☑	☑	☑	☑	☑	☑
American Black Walnut	2440 x 1220mm	☑	☑	☑	☑	☑	☑	☑
American Black Walnut	3050 x 1220mm	-	-	-	☑	-	☑	☑

DECORATIVE VENEERED PLYWOOD

☼ VENEER SPECIES	↔ SIZE	3.6mm	6mm	9mm	12mm
Ash	2440 x 1220mm	☑	☑	☑	☑
European Oak	2440 x 1220mm	☑	☑	☑	☑

DECORATIVE VENEERED BIRCH PLYWOOD

☼ VENEER SPECIES	↔ SIZE	18mm
Ash	2500 x 1250mm	☑
American Maple	2500 x 1250mm	☑
European Oak	2500 x 1250mm	☑
Sapele	2500 x 1250mm	☑

DECORATIVE VENEERED BLOCKBOARD

☼ VENEER SPECIES	↔ SIZE	18mm
European Oak	2440 x 1220mm	☑
Ash	2440 x 1220mm	☑

USES - Barfitting, shopfitting, hotels, furniture, cabinets, fire surrounds, boat fit-outs

EDGING TAPE For the professional finish of decorative products we supply matching edging tape to order.

FEXI VENEER

Please refer to the manufacturer's guidelines which are available on our website. Any species can be supplied as Flexi Veneer in sizes up to 3050 x 1240mm within short lead times. Prices on application.

☼ VENEER SPECIES	↔ SIZE	1mm
Ash	2440 x 1220mm	☑
Steamed Beech	2440 x 1220mm	☑
American Cherry	2440 x 1220mm	☑
Galician Pine	2440 x 1220mm	☑
American Maple	2440 x 1220mm	☑
European Oak	2440 x 1220mm	☑
Sapele Crown Cut	2440 x 1220mm	☑
Sapele Quarter Cut	2440 x 1220mm	☑
American Black Walnut	2440 x 1220mm	☑

USES - Barfitting, shopfitting, cabinet work

CHIPBOARD - MELAMINE FACED PANELS

☼ COLOUR	↔ SIZE	15mm	18mm
White - Textured	2440 x 1220mm	☑	☑
White - Smooth	2440 x 1220mm	☑	☑

MDF - MELAMINE FACED PANELS

☼ COLOUR	↔ SIZE	15mm	18mm
White - Textured	2440 x 1220mm	☑	☑
White - Smooth	2440 x 1220mm	☑	☑
Black	2440 x 1220mm	☑	☑

USES - Barfitting, shopfitting, hotels, furniture, cabinets, fire surrounds, boat fit-outs

QUALITY VENEERED PANELS TO YOUR SPECIFICATIONS

American Cherry	American Maple	Ash	Natural Grade Oak Veneer	Oak Veneer Plus Grade
Pine	Quarter Oak	Sapele Crown Cut	Sapele Quarter Cut	Select Grade Oak Veneer
Steamed Beech	Walnut	White Beech		

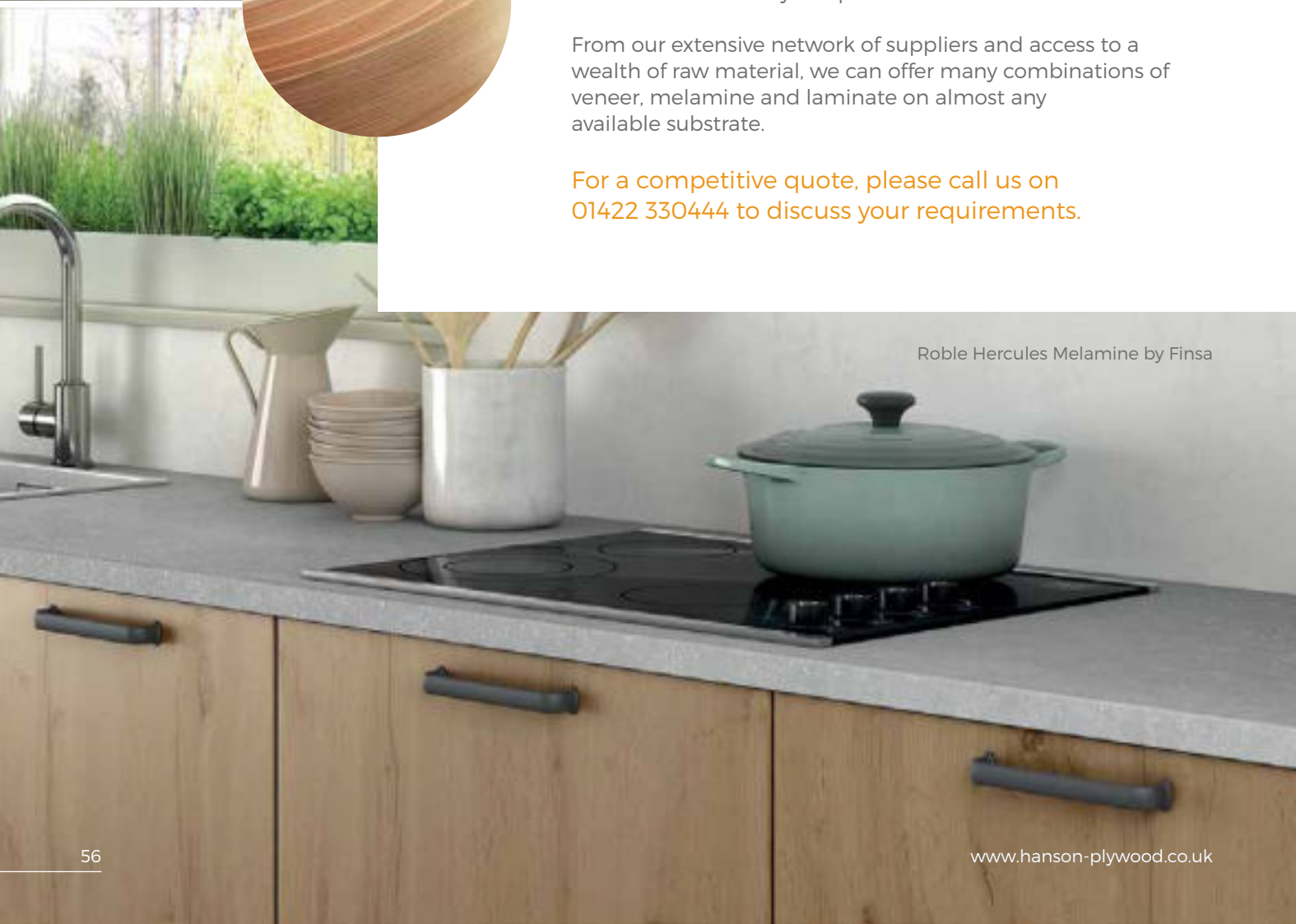


veneer and melamine finishes to suit

In addition to the decorative veneered panels we hold on stock, we also offer a diverse range of custom veneering solutions to meet any unique decorative demands.

From our extensive network of suppliers and access to a wealth of raw material, we can offer many combinations of veneer, melamine and laminate on almost any available substrate.

For a competitive quote, please call us on 01422 330444 to discuss your requirements.



Finsa Design



01. **Fibranatur TEX**



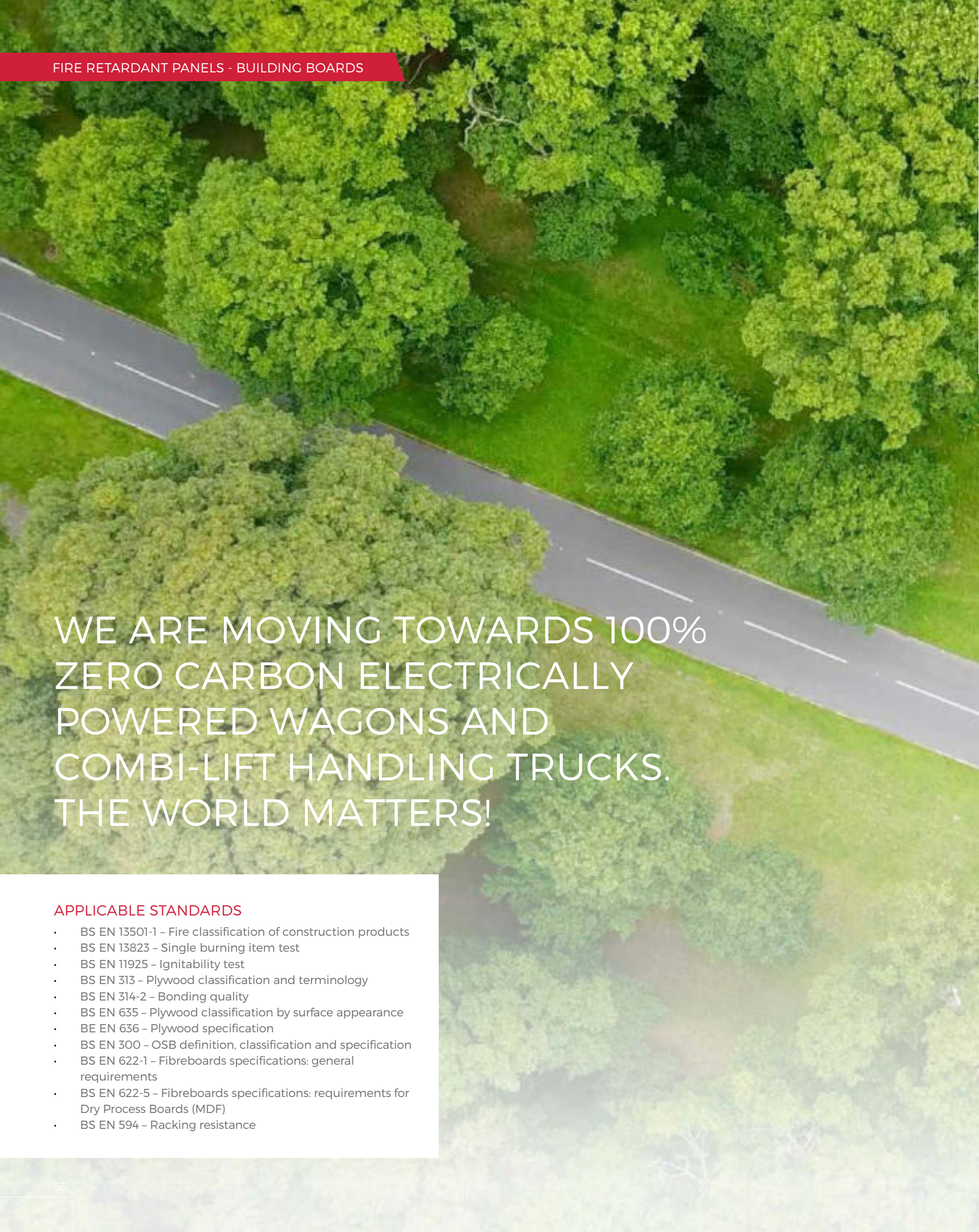
02. **Studio Natur**



03. **Special Cores**

Specialist Veneers

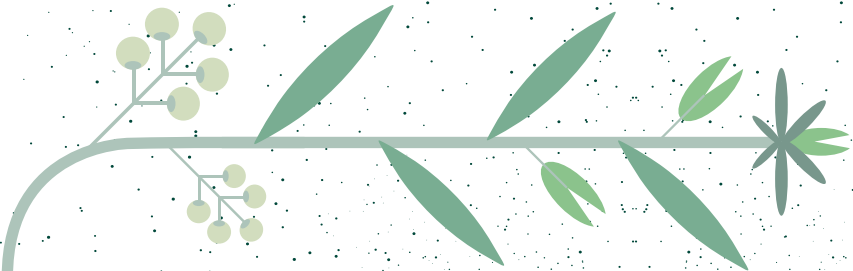
Contact: salesuk@finsa.com 0151 651 2400



WE ARE MOVING TOWARDS 100%
ZERO CARBON ELECTRICALLY
POWERED WAGONS AND
COMBI-LIFT HANDLING TRUCKS.
THE WORLD MATTERS!

APPLICABLE STANDARDS

- BS EN 13501-1 – Fire classification of construction products
- BS EN 13823 – Single burning item test
- BS EN 11925 – Ignitability test
- BS EN 313 – Plywood classification and terminology
- BS EN 314-2 – Bonding quality
- BS EN 635 – Plywood classification by surface appearance
- BE EN 636 – Plywood specification
- BS EN 300 – OSB definition, classification and specification
- BS EN 622-1 – Fibreboards specifications: general requirements
- BS EN 622-5 – Fibreboards specifications: requirements for Dry Process Boards (MDF)
- BS EN 594 – Racking resistance



FIRE RETARDANT PANEL - BUILDING BOARDS

Fire retardant panel products are specified in a wide range of end use applications such as wall linings, partitions, display panels, ceilings etc. Typical installations are: hotel foyers, offices, public libraries, schools, court houses, hospitals, cinemas, shopfitting, barfitting and some shipbuilding applications.

Fire retardant panel products can delay ignition for a meaningful time and lower the heat release rate after ignition. Both of these strongly affect the potential for spreading fire beyond the location of original ignition.

Classifications and Standards	60
Poplar	63
OSB	63
MDF	63
Chipboard	63
Non-Combustible Panels	64
Multi-Pro/Multi-Pro XS	65
Multi-Pro Tile Backer Board	65
Multi-Rend	65



Scan me to find
out more

FIRE RETARDANT PANELS
- CLASSIFICATIONS AND STANDARDS

A request we commonly receive is for panels with 1 hour or ½ hour fire rating.

These ratings relate to the concept of fire resistance and are typically associated with the ability of an elevation or door to withstand the passage of a fully developed fire for said amount of time.

Euroclass relates to the concept of reaction to fire and focuses on initial fire growth phase. A Euroclass rated panel may form part of a fire barrier system requiring 30 or 60 minutes fire resistance overall. We recommend that suitability of a Euroclass rated panel within the design is based upon 3rd party assessment or independent testing specific to the project in question.

There are 7 Euroclass classifications ranging from A1 to F. In line with the Construction Products Regulation (2013) each Euroclass rating requires testing against the relevant European fire test methods.

Hanson Plywood offer a range of panels manufactured with an A1 rating.

Untreated wood-based panels such as plywood, OSB, MDF and chipboard typically achieve a Euroclass D or E rating. Fire rated panels can be supplied to a Euroclass B or Euroclass C fire performance as required depending upon regulatory requirements.

SmartPly FR OSB/3 is available to either a Euroclass B and Bfl (flooring) fire performance (see table below).

Note: Bfl is a fire specification applicable to flooring applications only.

CLASS	PERFORMANCE DESCRIPTION	NATIONAL CLASS (ENGLAND & WALES)	NATIONAL TEST STANDARD (ENGLAND & WALES)
A1	BS EN ISO 1182 BS EN ISO 1716	Non-combustible	BS 476: Part 4
A2	BS EN ISO 1182 BS EN ISO 1716 BS EN 13823	Limited combustibility	BS 476: Part 11
B	BS EN 13823 BS EN 11925-2	0	BS 476: Part 6 BS 476: Part 7
Bfl (Flooring only)	EN ISO 9239-1 EN ISO 11925-2	N/A	N/A
C	BS EN 13823 BS EN 11925-2	1 & 2	BS 476 : Part 7
D	BS EN 13823 BS EN 11925-2	3	BS 476: Part 7
E	BS EN 11925-2	4	BS 476 : Part 7
F	No performance determined	Unclassified	No Test

HOW THIS DIFFERS FROM THE OLD STANDARDS...

Prior to the implementation of the Construction Products Regulation in July 2013, fire testing and classification for plywood, MDF, OSB and Chipboard was carried out in accordance with the British National Standard, BS 476. The two main classifications were Class 1 and Class 0.

CLASS 1 was classified according to Part 7 of BS 476 which required testing on the surface spread of flame. For a Class 1 board, the spread of flame had to not be more than 165mm in 10 minutes.

CLASS 0 was classified according to Part 7 and Part 6 of BS 476 and required compliance with the Fire Propagation Index in addition to the surface spread of flame. The Fire Propagation Index measures the heat released when timber burns. Panels achieving a Class 0 specification needed to have a Fire Propagation Index of <12.

UK BUILDING REGULATIONS

In England and Wales the fire requirements for buildings are dealt with by Approved Document Part B to the Building Regulations. Following the implementation of the Construction Products Regulation, Class 1 and Class 0 for plywood used in permanent construction were phased out in line with the Harmonised Product Standard BS EN 13986.

ARE THE NEW EUROCLASSES AS GOOD AS THE OLD NATIONAL STANDARDS?

The simple answer to this is that they are different. Euroclasses are a new set of Reaction to Fire tests that are deemed as acceptable as the old British Standards by UK Building Regulations. Now, for the first time in UK Building Regulations, these new reaction to fire tests evaluate smoke emission for timber and plywood. Euroclasses are not time rated fire performance classifications so do not offer 30 or 60 minute fire resistance.





Manufactured to
Building Board
Testing Association



BBA ACCREDITED MgO BUILDING BOARDS

A1 NON-COMBUSTIBLE FIRE RESISTANCE

PROPERTIES

 FIRE RESISTANT

 BREATHABLE

 EASY TO CUT, FIT & FIX

 MOISTURE RESISTANT

 IMPACT RESISTANT & DURABLE

 MOULD & DEGRADE RESISTANT

APPLICATIONS

WALL, FLOOR & CEILING LININGS
(UP TO 120MINS FIRE PROTECTION)
SEE PASSIVE FIRE PROTECTION GUIDE FOR FULL DETAILS

RENDER CARRIER BOARDS

TILE BACKER FOR BATHROOMS & WET AREAS

SOLID FUEL STOVE SURROUND

SUITABLE FOR TIMBER OR LIGHT STEEL
FRAME SYSTEMS

SOFFIT & FASCIA BOARDS & MUCH MORE...

For technical data and further information, please contact Hanson Plywood or visit www.resistant.co.uk

E: panels@hanson-plywood.co.uk T: 01422 330444

61



SPECIFY HANSON FIRE RETARDANT PANELS FOR YOUR PROJECT

We offer a range of Euroclass B rated panels that meet the requirements of EN 13501-1 which are intended to reduce flame spread and limit the contribution to the growth rate of a developing fire.

 POPLAR PLYWOOD - LIGHTWEIGHT

 OSB

 MDF

 CHIPBOARD

In addition, we offer a range of Resistant Building Boards (multi-purpose magnesium oxide panels). These are highly durable non-combustible Euroclass A1 rated panels meeting the requirements of EN 13501-1.

WE RECOMMEND CONSULTING OUR TRAINED TECHNICIANS FOR DETAILED ADVICE AND GUIDANCE ON ALL SPECIFICATIONS AND APPLICATIONS.



FIRE RETARDANT POPLAR PLYWOOD (PANGUA-FIRE)

SPECIFICATION - Euroclass B - s1, d0 • EN 636-1 • EN 314-2 Class 1 Glue Bond • E1 Formaldehyde Class • CE Marked
• PEFC (FSC® available on request)

THICKNESS	6mm	18mm
GRADE	B/BB	B/BB
2500 x 1220mm	<input checked="" type="checkbox"/>	<input checked="" type="checkbox"/>

USES - Please contact our team regarding specific applications and requirements

*Other thicknesses and sizes available on request

FIRE RETARDANT OSB

Structural, moisture resistant OSB/3 panel.

SPECIFICATION - Euroclass B-s2, d0, and BfL-s1 (flooring) in accordance with EN 13501-1 • CE Marked • FSC® Certified

SIZE	18mm
2397 x 1197mm	<input checked="" type="checkbox"/>

FIRE RETARDANT MDF

Made for use in public buildings and exhibitions and is designed to restrict the spread of flames in the event of fire. This form of MDF is usually dyed pink throughout the core.

SPECIFICATION - Euroclass B • FSC® or PEFC Fire Retardant • CE marked

SIZE	6mm	9mm	12mm	15mm	18mm	25mm
2440 x 1220mm	<input checked="" type="checkbox"/>	<input checked="" type="checkbox"/>	<input checked="" type="checkbox"/>	<input checked="" type="checkbox"/>	<input checked="" type="checkbox"/>	<input checked="" type="checkbox"/>
3050 x 1220mm	<input checked="" type="checkbox"/>	<input checked="" type="checkbox"/>	<input checked="" type="checkbox"/>	<input checked="" type="checkbox"/>	<input checked="" type="checkbox"/>	<input checked="" type="checkbox"/>

USES - Public buildings, exhibitions

FIRE RETARDANT SPANO ANTIVLAM CHIPBOARD

Unique high pressure impregnation treatment specifically designed for use in dry INTI situations.

SPECIFICATION - Euroclass B • 70% PEFC Certified Material

SIZE	10mm	12mm	18mm
2500 x 1250mm	<input checked="" type="checkbox"/>	<input checked="" type="checkbox"/>	<input checked="" type="checkbox"/>
3050 x 1250mm	<input checked="" type="checkbox"/>	<input checked="" type="checkbox"/>	<input checked="" type="checkbox"/>

*Available to forward order

USES - Stairwells, exit routes, lift shafts, corridors

BBA ACCREDITED MAGNESIUM OXIDE BUILDING BOARDS

PRODUCT AND APPLICATIONS	DENSITY	BBA (CERTIFICATE 15/5255)	INTERNAL USE	EXTERNAL USE	CUTTING METHOD	RACKING TO BS594	FIRE RATING (Refer to fire test reports for guidance)	FIRE RESISTANCE
multi-pro Tile Backer Board <ul style="list-style-type: none">Bathrooms and shower areas	1050kg/ m ³	✓	✓	Please follow the fitting and finishing guidance provided	Score & snap	✗	A1 Non-combustible	✗
multi-proXS <ul style="list-style-type: none">Highest strength passive fire protection boardTimber frame structural racking boardStable and durable laminating substratePark home, volumetric and SIPS manufacturing	1050kg/ m ³	✓	✓	Please follow the fitting and finishing guidance provided	Score & snap	✓	A1 Non-combustible	Load and non-load bearing partition 60, 90 and 120 minutes
multi-pro <ul style="list-style-type: none">Fire rated stud partition wallsSoffit strips and cavity closersLarge sheet tile backerBoiler backing board	1050kg/ m ³	✓	✓	Please follow the fitting and finishing guidance provided	Score & snap	✗	A1 Non-combustible	Non-load bearing partition 60 minutes. Up to 90 minutes for ceiling fire test
multi-rend <ul style="list-style-type: none">Render carrier boardSuitable for use with acrylic brick strips, stone claddingSolid fuel surround	1050kg/ m ³	✓	✓	Please follow the fitting and finishing guidance provided	Score & snap	✗	A1 Non-combustible	✗

RESISTANT BOARD PROPERTIES

Please visit our website to find out more information on our non-combustible panels: www.hanson-plywood.co.uk



Fire Resistant



Breathable



Easy to Cut



Moisture Resistant



Impact Resistant



Mould Resistant



Easy Fixing



High Strength



Safer Board



www.hanson-plywood.co.uk

multi-pro

A multi purpose building board with excellent fire and moisture resistance.

SPECIFICATION - BBA Certified • Euroclass A1 non-combustible to EN 13501-1 • CE Marked • MOBBTA Approved

SIZE	6mm	9mm	12mm
2400 x 1200mm	✓	✓	✓

USES - Wall cladding and infill panels, internal partitions, ceilings and linings, fascias/eaves/dormer/soffit linings, wet rooms, modular buildings, suitable substrate for high pressure laminates and veneers, POD linings

multi-proXS

Enhanced strength variant with 2 additional mesh layers for construction systems.

SPECIFICATION - BBA Certified • Euroclass A1 non-combustible to EN 13501-1 • CE Marked • MOBBTA Approved

SIZE	6.5mm	9mm	12mm
2440 x 1200mm	✓	✓	-
2400 x 1200mm	-	-	✓
2700 x 1200mm	-	✓	-
3050 x 1200mm	-	✓	-

USES - Timber frames, fire rated modular construction, prisons, park homes, anti-vandal units

multi-pro
Tile Backer Board

Can carry up to 100kg/m2 of tile and adhesive compared to only 30kg/m2 for plasterboard..

SPECIFICATION - BBA Certified • Euroclass A1 non-combustible to EN 13501-1 • CE Marked • MOBBTA Approved

SIZE	6mm	12mm
2400 x 1200mm	✓	✓
1220 x 1200mm	✓	-
1200 x 800mm	✓	✓

USES - Bathroom, shower areas, wet and humid areas, swimming pools

multi-rend

Enhanced strength variant with a heavily keyed surface for excellent adhesion to render basecoat.

SPECIFICATION - BBA Certified • Euroclass A1 non-combustible to EN 13501-1 • CE Marked • MOBBTA Approved

SIZE	9mm	12mm
2400 x 1200mm	✓	✓

E: panels@hanson-plywood.co.uk T: 01422 330444

Services tailored to the clients' individual requirements across a large number of industries

CUTTING, MACHINING AND LAMINATING

Through our wide network of suppliers, we offer a complete cutting, laminating and machining service in addition to all of our stock range to help meet specific manufacturing requirements.

Bespoke CNC machining facilities are available, allowing us to supply cut to size, machined or drilled panels.

A complete and varied range of laminates are also available to be bonded onto any of our standard panels stock. These panels can also be further cut, machined or drilled to customers' own individual requirements.

In addition to fire retardant product lines, we also offer the option to treat other stock lines.

The standard lead time for cut size panels is 3-5 days, with veneering and laminating lead times slightly longer at around 7-10 days from date of order. Fire retardant treatment times can vary between product lines; please contact us to assess lead times.

Please call us on 01422 330444 to discuss your requirements.

Alternatively email drawings or specifications over to us to sales@hanson-plywood.co.uk or fax to 01422 330706 and we can give a more accurate quotation.



Scan me to find out more

USEFUL RESOURCES



Timber Development UK
www.timberdevelopment.uk



Wood Campus
www.woodcampus.co.uk

PEFC
www.pefc.org

FSC®
www.fsc.org



Hanson Plywood Limited
www.hanson-plywood.co.uk
www.hanson-plywood-showroom.co.uk
www.theplywoodspecifiersguide.co.uk



SP101 Flooring Plywood
www.sp101.co.uk

CONVERSION TABLES

Imperial to metric

IMPERIAL	METRIC
1 inch	25.4mm
1 sq ft	0.0929m ²
1m ²	10.76 sq ft
1m ³	35.315 cu ft

Nearest thickness

IMPERIAL	METRIC
1/8 inch	3.2/3.6/4mm
1/4 inch	5.5/6/6.4mm
3/8 inch	9/9.5mm
1/2 inch	12/13mm
5/8 inch	15/16mm
3/4 inch	18/19mm
7/8 inch	21/22mm
1 inch	24/25mm
1 ¼ inch	30mm
1 ½ inch	38/40mm
1 ¾ inch	44/45mm
2 inch	50mm

Equivalent panel sizes

IMPERIAL		METRIC	
5' x 4'	20 sq ft	1525 x 1220mm	1.8605m ²
5' x 5'	25 sq ft	1525 x 1525mm	2.3256m ²
6' 6" x 2' 3"	14.63 sq ft	1981 x 686mm	1.3590m ²
6' 6" x 2' 6"	16.5 sq ft	1981 x 762mm	1.5095m ²
6' 6" x 2' 9"	18 sq ft	1981 x 838mm	1.6600m ²
7' x 3'	21 sq ft	2135 x 915mm	1.9535m ²
8' x 4'	31 sq ft	2400 x 1200mm	2.88m ²
8' x 4'	32 sq ft	2440 x 1220mm	2.9768m ²
8' x 5'	40 sq ft	2440 x 1525mm	3.7210m ²
8' x 6'	48 sq ft	2440 x 1830mm	4.4652m ²
8' 4" x 6' 8"	56 sq ft	2550 x 2050mm	5.2275m ²
8' 6" x 6' 9"	57.38 sq ft	2620 x 2070mm	5.423m ²
9' x 5'	45 sq ft	2745 x 1525mm	4.1861m ²
9' x 6'	54 sq ft	2745 x 1830mm	5.0234m ²
9' 2" x 6' 9"	62 sq ft	2800 x 2070mm	5.7960m ²
10' x 4'	40 sq ft	3050 x 1220mm	3.7210m ²
10' x 5'	50 sq ft	3050 x 1525mm	4.6513m ²
10' x 6'	60 sq ft	3050 x 1830mm	5.5815m ²
12' x 6'	72 sq ft	3660 x 1830mm	6.698m ²



Hanson Plywood Limited
Drakes Industrial Estate, Shay Lane
Ovenden, Halifax HX3 6RL
Tel: 01422 330444 **Fax:** 01422 330706
Email: panels@hanson-plywood.co.uk
www.hanson-plywood.co.uk

Designed by www.primecreative.com

This catalogue is printed on GalerieArt Satin using the latest print technology that reduces environmental impact by using 100% vegetable based inks, low waste and renewable energy sources. 97% of all waste is recycled.



"WE ARE PART OF A LONG AND COMPLEX
COLLECTIVE STORY, ONE IN WHICH
HUMAN BEINGS ARE NOT ONE SET OF
ATTRIBUTES, FIXED AND UNCHANGING,
BUT RATHER, A WORK IN PROGRESS,
CAPABLE OF DEEP CHANGE."

NAOMI KLEIN

