

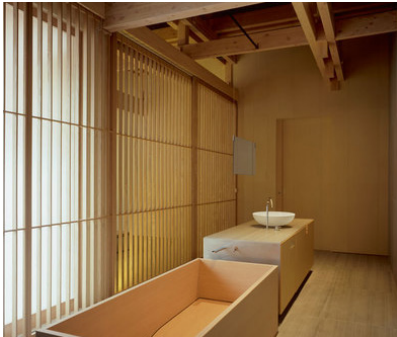
# The Plywood Specifiers Guide

ISP2

Lightweight



## Lightweight Poplar Plywood for Furniture, Wall Panelling, Architectural Design



# Plywood panels for furniture, wall panelling and architectural design

## High quality lightweight poplar plywood

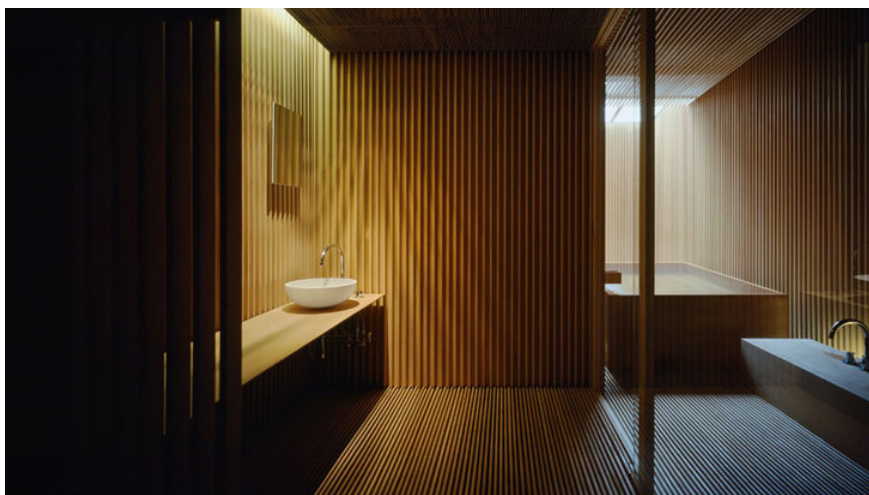
Poplar plywood panels have the unique properties of being lightweight whilst still retaining remarkable structural strength due to the cross banded construction of the timber veneers. These properties provide an ideal material which is widely used in the construction and design industries for components in furniture, wall panelling and architectural design.

Panels have been technically developed and refined over many years to ensure exceptional reliability and performance in all relevant applications.

### Key attributes of poplar plywood include:

- Lightweight whilst still retaining structural strength.
- Clean and aesthetically pleasing appearance
- Stability and ease of machining
- Good core composition
- Glue bonding with high moisture resistance
- Panels suitable for laser or waterjet cutting
- Flame retardant specifications available
- The highest environmental credentials for legality and sustainability

Our extensive range of premium quality poplar plywood is produced to the highest specification using the finest quality poplar logs available.



## LIGHTWEIGHT POPLAR PLYWOOD FOR FURNITURE, WALL PANELLING, ARCHITECTURAL DESIGN



### Specialist poplar plywood offering a multitude of attributes for the construction/design industry

A selection of sizes are available with thicknesses ranging from 3.0mm up to 40mm and face grades to suit all applications.

The information illustrated covers the most common specifications used in the industry.

### Applicable Poplar Products

- ✓ Poplar Throughout
- ✓ Ilomba Twin
- ✓ Fire Retardant
- ✓ Pure Glue Eco Friendly
- ✓ Birch Faced
- ✓ Laser Lite

### Applications



FURNITURE



ARCHITECTURAL DESIGN



WALL PANELLING

### SPECIFICATION DETAIL:

Thicknesses (mm)	3mm-40mm
Dimensions (mm)	2440 x 1220, 2500 x 1220, 3050 x 1220
Average density	400 Kg/m <sup>3</sup> ± 10%
Product standard	EN 636-1
Glue bond	EN 314-2 Class 1 (Interior)
Formaldehyde release	Class E1 (tested to EN 717-2)
Moisture content	8%-13%
Veneers	High quality face and core
Environmental certification	PEFC™ 100%
European Timber Regulation (EUTR) status	Compliant – sourced within EU
CE marked	BS EN 13986
Material safety data sheet	Available

# Notes



---

**CONTACT:**

**Hanson Plywood Limited**  
Drakes Industrial Estate  
Shay Lane, Halifax  
West Yorkshire, HX3 6RL

**Tel:** 01422 330444

**Fax:** 01422 330706

**Email:** [sales@hanson-plywood.co.uk](mailto:sales@hanson-plywood.co.uk)

**www.hanson-plywood.co.uk**

For more information visit: [www.hanson-plywood.co.uk](http://www.hanson-plywood.co.uk)

